

STRINGS CURTAIN
|||Lineview



home page



brand movie

STRINGS CURTAIN
|||Lineview

Anonimo Design corp.

Odakyu Minami Aoyama Mansion 701, 5-12-3 Minami Aoyama,
Minato-ku, Tokyo 107-0062
Tel: (+81) 3 3797 3904

<https://anonomodesign.com/> info@anonomodesign.com

STRINGS CURTAIN Lineview





Left above / A Chandelier with Sparkling Silver Threads
 Left below / Double layered curtain with DANZOME AO and Sand Gray
 Right above / Impressive cloud-patterned digital-prints in a museum
 Right below / Enhancing the elegance as a window decoration

Every product in the Lineview lineup is made with flame-retardant threads, ensuring fire safety. Therefore, there are no limitations on where they can be used, making them suitable for restricted environments such as hospitals, hotels, art galleries, and apartments. Additionally, since all our products are domestically produced by ourselves in Gunma Prefecture in Japan, we can promptly accommodate special sizes, unique colors, and printed patterns.

Our string curtains offer a unique translucent quality ideal for use as partitions. They can be creatively adapted for various purposes, such as enhancing the ambiance of beauty salons or hotels, or serving as decorative ceiling elements resembling chandeliers. Lineview can offer you a diverse way of usage depending on the ideas.

The Lineview lineup offers an unparalleled variety of colors worldwide, utilizing the skills of local craftsmen to create gradient-dyed DANZOME curtains and employing the latest technology for digital printing, allowing customization of patterns. The lineup is extensive, covering a wide range of options. We continue to evolve, exploring expressions that only Lineview can offer.

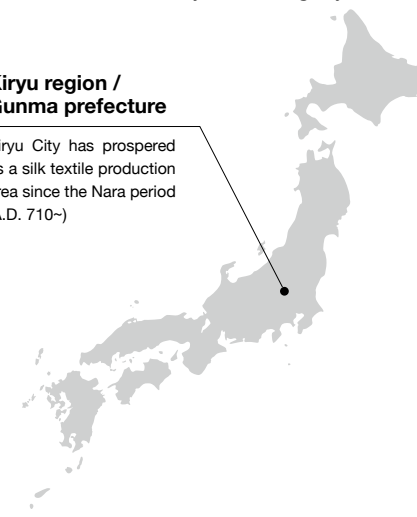
Tradition and expertise World-class quality and variety Made in Kiryu / Japan

**In addition to a rich range of color variations, further collaboration with local artisans
Lineview is the only one that can create a variety of expressions with string curtains**

The Lineview is produced in the Kiryu region of Gunma prefecture. This area has long been renowned as a center for textiles and played a crucial role in meeting the demand for kimonos in the Edo period, supporting the bustling metropolis of Edo (present-day Tokyo). Although the everyday use of kimonos by the Japanese people has waned over time, the Kiryu region still houses various companies related to the textile industry, with skilled artisans inheriting and passing down their expertise. Each of these companies, born from the accumulation of tradition and experience, owes its existence to the hands of these artisans. Lineview, too, is crafted with the support of these skilled craftsmen, taking inspiration from the rich traditions and experiences of the region. Going forward, Lineview aims for further evolution, leveraging this heritage and collaborating more deeply with the local artisans to carry on the legacy.

Kiryu region / Gunma prefecture

Kiryu City has prospered as a silk textile production area since the Nara period (A.D. 710-)



Entirely flame-retardant Realize your brilliant ideas Without limits

**In places such as hotels and commercial facilities where flame-retardant materials are required,
Lineview can offer a wide range of colors and patterns, expanding the possibilities for creative designs.**



Fire-retardant class 1 (JFRA)

CLASSIC

A basic lineup ranging from classic white to sparkling silver thread, offering a versatile selection for every occasion.

Width	1m
Length	3m / 4m
Production time	In stock
Colors Variation	8 colors

- Custom length: from 4m to 20m



White (W)



Black (BK)



Beige (BE)



Gold (GO)



Brown (BR)

Silver series (real silver threads woven in)



Silver White (MW)



Silver Black (MBK)



Silver Metallic (MMK)

Custom length: From over 4 meters up to 20 meters. Please consult for the feasibility and production time.



PRISM

Vibrant collection featuring 20 colors inspired by fruit hues. Custom colors also available.

Width	1m
Length	3m / 4m
Production time	2 weeks
Colors Variation	20 colors (custom colors available)

- Custom length: from 4m to 20m



Blossom (BL)



Strawberry (ST)



Raspberry (RA)



Banana Cream (BC)



Golden Apricot (GA)



Sun Orange (SO)



Lime (LI)



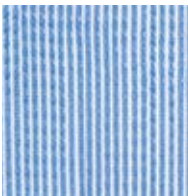
Grass Green (GG)



Mint (MI)



Clean Water (CW)



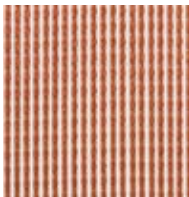
Marina (MA)



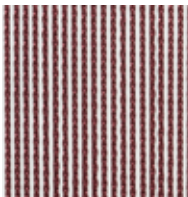
Princess Blue (PB)



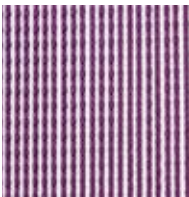
Honey Gold (HG)



Mango (MG)



Red Mahogany (RM)



Grape Juice (GJ)



Crown Navy (CN)



Jungle (JG)



Sand Gray (SG)



Bitter Chocolate (BCH)

Custom length: From over 4 meters up to 20 meters. Please consult for the production time.
Custom colors: Color chip sample required. Minimum order quantity required. Inquire for details.

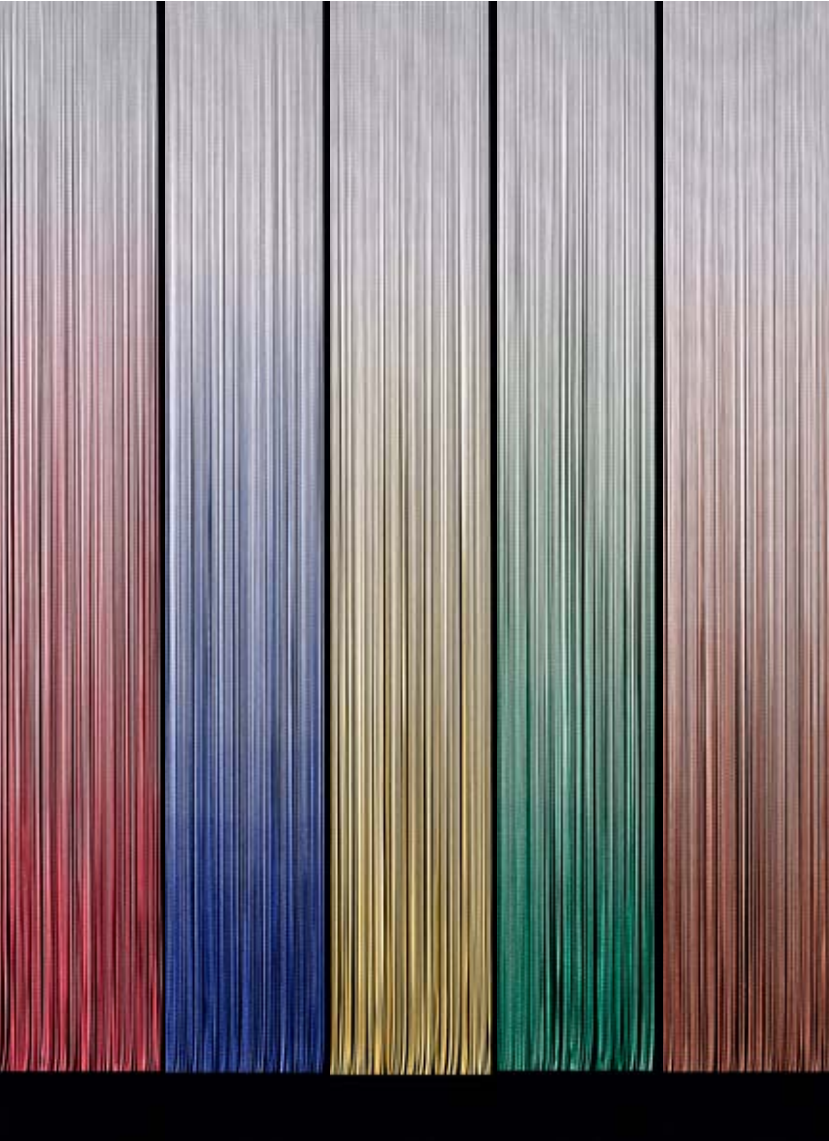


DANZOME

DANZOME, dyed using traditional Japanese hand-dyeing techniques to achieve a gradient effect, creates a space with a translucent quality by varying the concentration of the dye.

Width	1m
Length	3m / 4m
Production time	3 weeks
Colors Variation	5 colors

- Custom length: From over 4 meters up to 5.5 meters. Please consult for the production time.



AKA AO KI MIDORI CHA

- We gradually lighten the deep color (single color), so please specify the deep color when ordering custom colors.
- We can make a gradient from either the bottom or the top.
- When placing an order, please specify the range of the gradient and the range of the white color.

DIGITAL PRINT

Our digital printing, utilizing the latest technology, allows you to print your favorite patterns, logos, and more on string curtains.

Width	1m
Length	3m / 4m
Production time	3 weeks
Colors Variation	Multi colors

-Custom length: From over 4 meters up to 10 meters. Please consult for the feasibility and production time.

-Full data submission (ai / psd / tiff etc.)



- Please send a confirmation PDF along with the print data.
- Color correction is not available. (We will print the data you have sent as is.)
- The fine print, patterns, etc., may become less visible as you approach the bottom.
- The pattern may appear darker or lighter depending on the background conditions, color, or surrounding brightness.



Basic specification

- Material : 100% Polyester FR
- Flame retardant class 1 (JFRA)
- Width : 1 meter (12 strings in 1-inch width)
- Height : 3 or 4 meters (in-stock)
- Custom length: over from 4 meters up to 20 meters.
Please consult for the production time.

Maintenance

- Lineview requires no special daily care, but please take note of the following if you choose to wash it.
- When washing, please follow the laundering instructions of the care label which is sewn on the product.
 - If washing, bundle the strings at approximately 1-meter intervals and place them in a laundry net.
 - Please launder by water washing, and refrain from using bleach.
 - Do not tumble dry; please hang dry instead.
 - If you notice wrinkles in the strings, please use a steam iron to smooth them out.

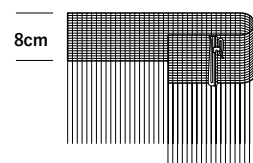
Installation

Using curtain rail / opening or closing



Curtain hooks

With 8cm wide flat-tape sewn on. Adjustable hooks included (12pcs/m)
Please specify the width dimension with 3-5% extra compared to the
rail width.



The flat-tape has pockets spaced about 1cm apart for inserting hooks, so please insert the adjustable hooks wherever you prefer. A recommended spacing for the adjustable hooks is approximately 8cm. Additionally, when inserting the hooks, that section may bulge, causing the curtain width to slightly shrink. Therefore, please specify the finished width by adding about 3-5% to the length of the rail in advance.

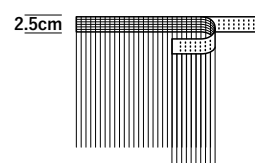
**For clean and flat appearance /
Fixed usage**



Velcro hook tape

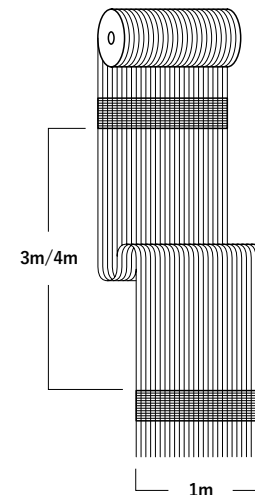
2.5cm wide female tape sewn on the back of the curtain.
Adhesive-type male tape* included.

* For long-term use, we recommend using a rail with built-in male tape.



When directly attaching Velcro hooks to surfaces such as the ceiling, the curtain and Velcro may form an L-shape and easily come off. Therefore, ensure that the attachment area of the Velcro hooks is oriented vertically. Additionally, for long-term use, there is a possibility that the adhesive strength of the male tape may weaken. To reinforce, consider using a rail with built-in male tape, tacking the male tape (staple gun), or employing other suitable methods.

About Sewing and Processing



Width cutting

If the width is cut on-site, please take measures such as fraying prevention.

Width connecting

We stitch and connect the belt sections, but it does not affect the appearance of the cords.

Cord cutting

The cords can be cut with scissors, and it will not fray even if left cut.

Special cord cutting

Please provide actual size patterns for cuts involving curves, arches, wavy shapes, etc., other than diagonal straight cuts.

Double layer stitching /
Triple layer stitching

To adjust transparency, it is possible to sew by layering.

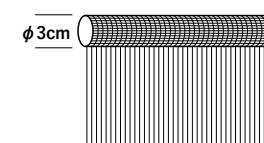


Installing using a pole or tension rod.

Tube seam

Sewn in a tube shape at the top. It can accommodate poles with a diameter of up to 3cm. *

* Adjustable



We typically sew it to accommodate poles with a diameter of up to 3cm, but we can adjust it to be thinner or thicker based on your preferences. The tube seam looks the same from the front and back, allowing for versatile use without worrying about the orientation.

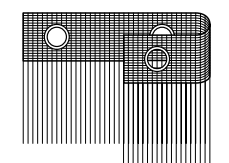


**Installing using a pole,
tension rod and S-hooks.**

Eyelet

You can choose from three sizes of eyelets. Please also specify the spacing and quantity of the eyelets.

Large (outer diameter 70φ・inner diameter 50φ) Medium (outer diameter 55φ・inner diameter 36φ)
Small (outer diameter 23φ・inner diameter 12φ)



When the eyelets threaded through a pole, the fabric, with a width of 1 meter, drapes to about 70cm, creating a natural drape effect (varies depending on the pole thickness). The eyelets are silver in color. When threading through a pole, you can choose either large or medium eyelets, and the quantity should be an even number. If hanging with S-hooks or similar, please choose small eyelets. In this case, the quantity doesn't have to be an even number, but be cautious not to space the eyelets too far apart to prevent the curtain from sagging.