



exclusive distributor :



TAT MING WALLPAPER

達 明 牆 紙

DESIGNTex

environmental friendly - high performance
upholstery - panel fabric - drapery - wallcovering



DesignTex products may contribute points to :



HKGBC
BEAM Plus
綠建環評



INTERNATIONAL
WELL
BUILDING
INSTITUTE™





Designtex: innovative textiles, wallcoverings and surface solutions for any environment

Designtex is a celebration of imaginative minds and fact based knowledge coming together to offer fresh, innovative and performance-tested environment enhancement surfaces and solutions. An inquisitive nature allows for us to be leaders in unique design, fabric technology, environmental responsibility and service. With this approach we have expanded our product offering to include wall-to-wall and floor-to-ceiling solutions that enhance environments with a convergence of form and function.

At Designtex, their environmental vision obligates them to ground their decisions and actions in sustainable thinking, and to use a spirit of inquiry to inspire sustainable awareness in others.

Their mission is to design and deliver innovative solutions that benefit human and environmental health, while educating and challenging ourselves, their suppliers and customers in sustainable practices.

Steelcase Inc, the parent company of Designtex, is the global leader in the office furniture industry founded in the USA and has over 100 years of history. Steelcase offers a comprehensive portfolio of architecture, furniture and technology products and services designed to unlock human promise and support social, economic and environmental sustainability. This core value is also demonstrated through its family of brands, including Designtex.

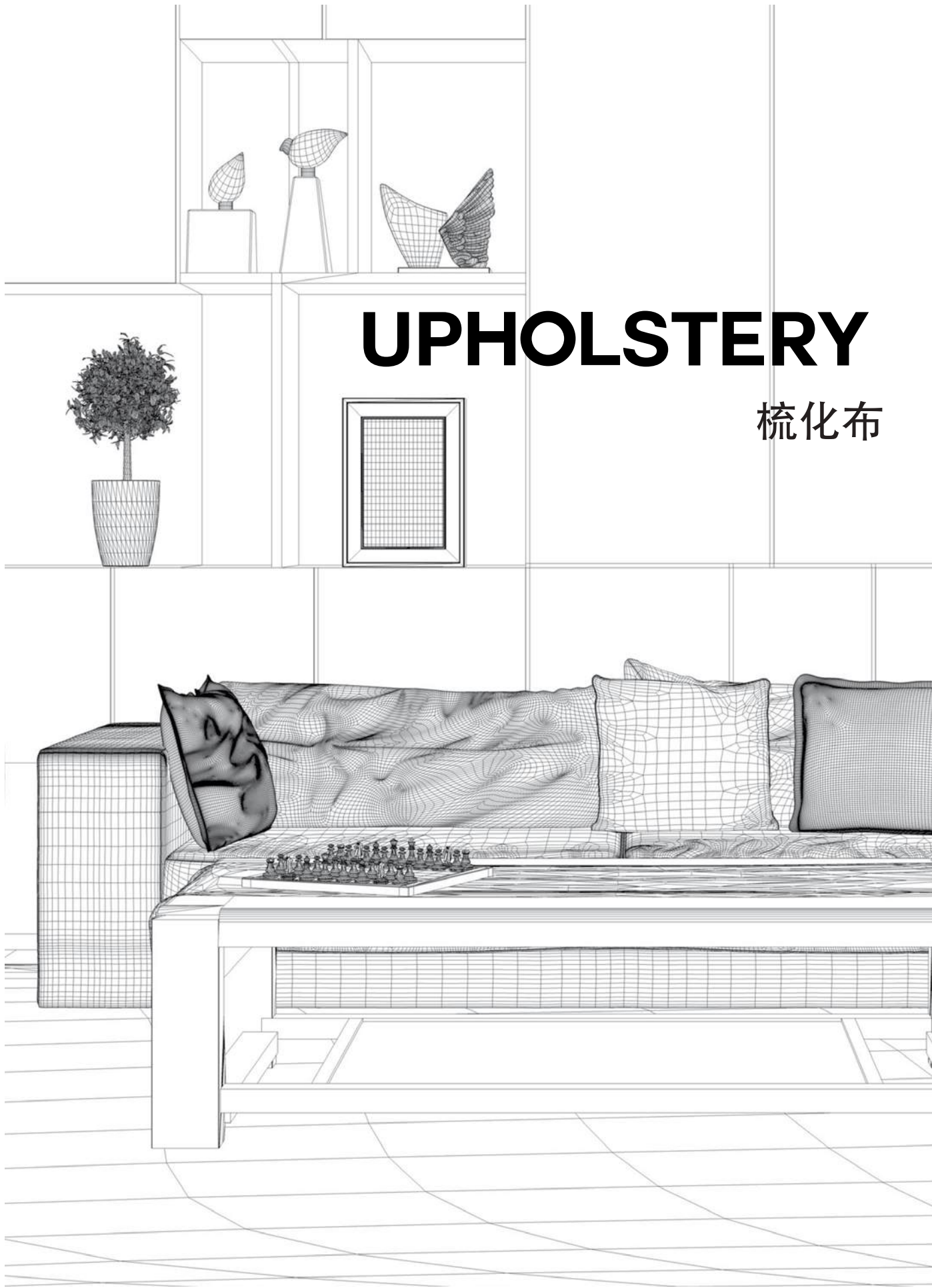
Designtex: 創新的牆紙、布藝和環保物料，適用在任何環境。

Designtex 的理念是把幻想中不可能的事物，結合科技及知識概念變出新元素，提供創新和優質產品效果。獨特設計、精湛技術、環境責任和卓越服務，使 Designtex 成為行業中的領導者，Designtex 持續擴大產品供應量和款式範圍，同時加強保護環境的功能元素。環保是 Designtex 品牌近年的發展方針，除產品設計外觀，亦考慮到產品物料本身的耐用度及持續性，銳意引起大眾對環保及持續使用的關注。Designtex 希望能夠為各設計師及用家提供既美觀又達到環保功能的產品。

Designtex 的母公司 Steelcase Inc，是在美國已創立超過一百年的高級辦公室傢俱品牌。Steelcase 旨在為顧客提供優質而全面的建材、傢俱及科技產品和服務，並通過旗下品牌的產品展現這項核心價值 (包括 Designtex)，其產品品質自然具有信心保證。

UPHOLSTERY

梳化布



CLASSIC BLUE

Chiyogami - 4118

Woolish - 3973

Geometric II - 3836

Aloft - 3846

Line Variations - 3961



MINT GREEN

Score - 3866

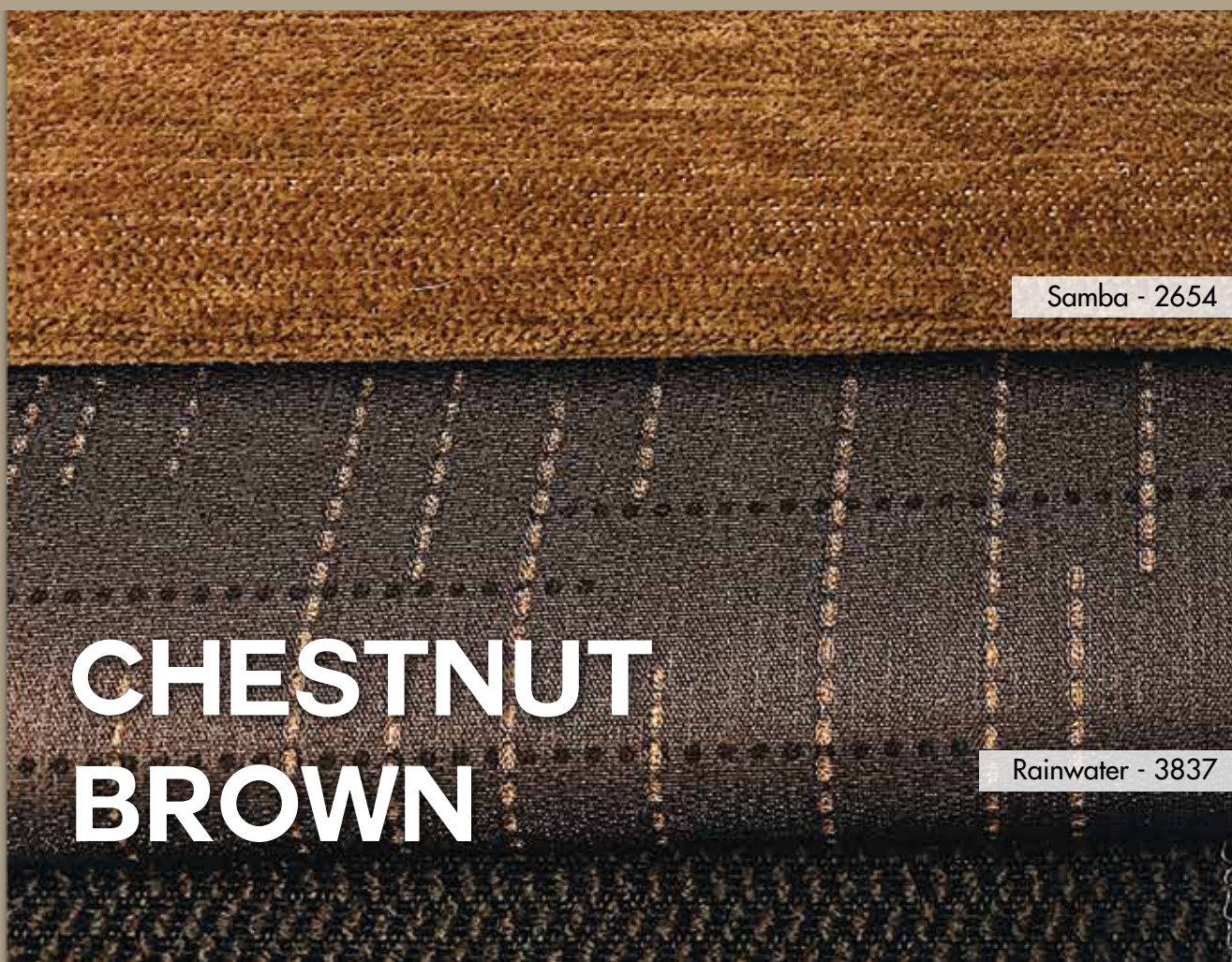
Kabuto - 4120

Building Blocks - 3821

Windowpane Crypton - 3861

Hem Stitch - 3752

Span - 3954



HAZEL BEIGE

Boucle - 3659

Glint - 5619

Chiyogami - 4118

Kami - 3874

Gleam - 3708

Woodcut - 3448

Minnie - 4132

WARM GREY

Burrard - 3890

Connor - 3929

Dapple - 3937

Segment - 3783

Starburst - 3748

Rodenbach - 3793

Minnie - 4132

ROSY PINK

Distressed Texture - 3935

Boucle Dot - 3944

Loop To Loop - 3467

BitDrift - 3958

Burrard Ground Cloth - 3891

CrissCross - 3959



Flammability
阻燃性物料



Abrasion
高耐磨度物料，可用於戶外環境



Physical Properties
防起毛球物料



Colorfastness to Light
遇光或太陽不容易褪色



Wet & Dry Crocking
染色的布料互相摩擦時(不論乾或濕),
不會褪色

Cleaning Code | 清潔標籤

W – Clean only with water-based cleaner or foam upholstery cleaner ¹.
Do not over wet.
Do not use solvents.

S – Clean only with solvent based cleaner ²
Do not saturate.
Do not use water.

WS – Clean with water based or solvent based cleaner.
Do not saturate with liquids.

X – Do not clean with either water or solvent-based cleaner.
Use only vacuuming or light brushing.

¹ Water-based cleaning agents are often sold as upholstery shampoo. They are usually sold as foams, concentrated liquids and dry compounds. Examples include Zep Upholstery Cleaner, Resolve, Revitalize, Simple Green etc.

² Examples of solvent based cleaners: Fantastik, 409 Chemspec, Masterblend Citrus, Greenworks etc.

W – 只可使用水基清潔劑或傢俱泡沫清潔劑 ¹
切勿使用過量清潔劑
切勿使用溶劑


S – 只可使用溶劑型清潔劑 ²
切勿讓清潔劑滲透布料
切勿用水清洗

WS – 可使用水基或溶劑型清潔劑
切勿讓液體清潔劑滲透布料

X – 切勿使用水基或溶劑型清潔劑
只可使用吸塵器或毛刷進行清潔

¹ 水基清潔劑常製成泡沫、濃縮液、乾洗劑形式的傢俱清潔劑在市面上出售，
如 Zep Upholstery Cleaner、Resolve、Revitalize、Simple Green 等。

² 常見的溶劑型清潔劑有 Fantastik、409 Chemspec、Masterblend Citrus、Greenworks 等。



Microgrid - 3514

Forestbound - 3835

Terra - 3858

Vero - 3857

Linnen - 3921

Pivot - 3374

sta★kleen®

PERFORMANCE FABRIC

Sta-Kleen® is a durable built-in protective coating that protects the surface of the upholstery from ink and other challenging stains. Ink, in many cases can be simply removed by the use of a clean dry white cloth. If ghosting remains, the use of isopropyl alcohol is effective in satisfactory removal.

Sta-Kleen® 是一種注入式的保護技術，它可以預防由墨水或其他刺激的顏料造成的污漬。在一般情況下，只要使用乾淨的白色乾布在表層上的污漬一抹便可清潔。若污漬較難清潔，可用火酒一抹便能清除，亦不會破壞表層上的保護功能。


FUNCTIONAL TECHNOLOGY

功能性技術

Cleangene + Silicone

Cleangene + Silicone is the latest enhancement to this ground-breaking technology. The addition of a silicone top coat system further enhances the stain-resistance capability of the Cleangene technology, to offer resistance to the toughest water- or oil-based stains including mustard, coffee, and iodine. The silicone top coat cross-links with the Cleangene polymer system and will not deteriorate over time.

Cleangene + Silicone 是在 Cleangene 突破性技術上新增的強化功能，可抵禦大部分商用清潔劑及消毒劑反覆清洗，耐磨度高。額外的矽膠塗層進一步增強 Cleangene 技術的抗污功能，更能抵禦最為頑固的水性或油性污漬包括芥末、咖啡和碘酒。矽膠塗層結合 Cleangene 聚合物系統，使其功能不會隨著時間而降低。



Luster - 3701

Big Dot - 3525

Little Dot - 3524

Leaves - 3494

Beguiled By The Wild - 3495

PRODUCT CERTIFICATION

產品認證



Crypton® is the textile solution offering resist stains, fungi, bacteria and mildew. Liquid beads up and rolls off on the fabric surface. It is easy to clean and maintain.

Crypton® 是一種注入式的保護技術，能有效地抵擋污漬，真菌、細菌和霉菌。液體在表面時會變成水珠流走，有效防水，易於清潔，耐用性高。



A durable stain-resistant high-performance upholstery with a built-in coated moisture barrier that uses environmentally preferred components. It contains a silver-ion-type antimicrobial.

Crypton® Green 是一種注入式的技術，不但耐用、防水，更使用環保物質，同時運用了銀離子技術能有效抗菌。



Nano Tex™ is a nanotechnology-based permanent performance stain-resistant finish, which is designed to reduce the use of environmentally harmful fluorochemicals. Its particles bond to the fiber to repel and release stains at the molecular level.

Nano Tex™ 是一種永久性的天然納米技術，能有效地防水和抵抗表層的污漬，當 Nano Tex™ 注入紡織品中，會令表層遇水時即時變成水珠，而且流走速度快，耐用性高，並且減少使用對環境有害的含氟化合物。



Teflon® fabric protector is built right into the fabric, which means it keeps protecting the fabric wash after wash. And it is developed specifically for fabrics so it does not impact breathability or feels.

Teflon® 是一種塗於表層的保護技術，當 Teflon® 注入布料上，它有疏水的功效，令布料易於清潔及打理。此技術專門應用於布料上，所以絕不會令布料的質地和透氣度減低。



Trevira CS® satisfies international fire protection standards, permanent flame retardancy which shall not be lost as a result of use, washing or ageing. Trevira CS® only releases 1/5 of CO of other fabrics, and won't release CO₂, hydrogen cyanide (HCN), hydrochloric acid (HCl), chlorine (Cl₂) and phosgene (COCl₂) during a fire. It has high colour fastness to light, abrasion resistance and high UV-resistance

Trevira CS® 織物在歐洲、亞洲、美國等地區所進行的國際性防火測試中，均被列入阻燃類材料。Trevira CS® 織物的阻燃性能永久地融入纖維的分子結構中。由此織物無需再用化學製劑浸漬，不受織物面磨損度及清洗次數影響，都能保持其防護功能。另外，它在燃燒時排出的一氧化碳，只相當於其他面料的五分之一，亦不會散發氧化氯、二氧化碳、氯化氫、氟化氫等有毒氣體。Trevira CS® 的織物遇光或太陽時不易褪色、耐磨度高，以及有效抵抗紫外光。



INCASE® fabric protection is an advanced treatment that provides superior liquid and stain repellency, odor protection and odor resistance with superior cleanability because of the advanced formulations and the use of Silver Ion technology.

INCASE® 科技採用了銀離子技術，具有出色的防水、防污、抗臭，而且容易清潔。



A nanotechnology-based finish that provides resistance to water and oil.

Greenshield® 是一種納米技術，具有防水和防油性能。

PreFixx®

PreFixx® protective coating has set the standard for performance in the coated fabrics industry. In applications for marine, transportation, auto aftermarket upholstery and healthcare, cleanability is one of the most important factors in a fabric's success. Upholstery products for this market need to be durable as well as cleaned and disinfected with a variety of chemicals without worrying about discolorations or damage to the upholstery finish.

Durability :

PreFixx® coatings resist stain penetration for unique, long term protection.

Easy maintenance :

Most common stains like dirt and smudges can be simply wiped off. Many difficult stains like ballpoint ink can be cleaned with isopropyl alcohol without damaging the PreFixx® coating when the recommended cleaning instructions are followed.

PreFixx® 保護塗層為布料行業奠定了功能性的標準。就應用於船舶業、運輸業、汽車內飾業和醫療保健業而言，易潔度是布料成功的一大重要條件。尤其是醫療保健業，使用的布藝產品必須耐用，並能在使用多種化學劑反覆清洗與消毒後不會褪色和損壞。

耐用度 :

PreFixx® 塗層能阻擋污漬滲透，為布料提供獨特且長期的保護。

易於保養 :

大部分常見的污漬如灰塵和污垢均能輕易抹走，許多頑固的污漬如原子筆墨水，只需跟從建議的清潔指引使用異丙醇，就能除去污漬而不損壞 PreFixx® 塗層。

Beauty Gard® SUPREME

A stain-resistant protective topcoat. The material creates a barrier between vinyl and most staining agents such as suntan lotion, wine, coffee, pen and permanent marker inks. Most stains can be cleaned with soap and water or isopropyl alcohol (70%) .

特殊材質製成的抗污保護塗層能阻擋乙烯基接觸最強力的染色劑如防曬霜、酒精、咖啡、原子筆及油性記號筆墨水，因此大部分的污漬均能以水和肥皂清洗乾淨。

RESILIENCE®

Resilience® represents the latest technology in faux leather and vinyl protection, enhancing performance where it is needed the most.

- Stain resistance
- Anti-microbial & anti-bacterial protection
- Abrasion resistance

Resilience® 代表仿皮和抗污保護塗層的最新科技，在提高產品性能方面尤其重要。Resilience® 的三大特點包括：

- 抗污漬
- 抗微生物及抗菌保護
- 耐磨損

MorCare™

Morcare™ upholstery vinyl is easy to clean. To prevent build up of dirt and contaminants, which may cause permanent staining. Periodic cleaning is highly suggested.

Morcare™ 產品易於清洗，為防止積聚灰塵和污染物而導致永久性污漬，強烈建議定期進行清洗。

PBG+ with silverguard

A high-performance coating for vinyl that is bleach cleanable, stain- and ink-resistant, and allows the use of most quaternary and phenol germicides typically used in healthcare settings. PBG+® with Silverguard® uses silver-ion technology to inhibit mold, mildew and bacteria. It also contains a flame-retardant additive.

PBG+® 是一種高性能塗料，可漂白，耐污，耐墨水，並且可以使用醫療環境中經常使用的殺菌清潔劑。帶有 Silverguard® 的PBG+® 使用銀離子技術，抑制黴菌，黴菌和細菌，而且更添加阻燃功能。

PERMABLOK³® ADVANCED VINYL PROTECTION

Protection against germs, abrasions, and stains.

A proven vinyl protective coating which is engineered to create a tough, effective barrier against the three biggest problems encountered in healthcare and hospitality environments - germs, abrasion, and stains.

Superior antibacterial protection

Importantly, it also guards against the surface growth of fungus, mold, and mildew spores which can cause unpleasant odors, unsightly pink and black stains, even allergic reactions.

PERMABLOK® offers superior bacterial protection that healthcare and hospitality industries can really count on.

抗菌、耐磨損、防污跡

研發出經過認證的抗污保護塗層，形成強韌而有效的屏障，能抵禦醫院和酒店室內環境經常遇到的三大問題：細菌、磨損和污漬。

卓越的抗菌保護

PERMABLOK® 的其中一項重要功能是防止真菌、霉菌及黴菌孢子在布料的表面滋長，從而有效杜絕因細菌滋生帶來的異味和不雅觀的斑點，甚至是過敏反應。PERMABLOK® 為用家提供卓越的抗菌保護，是醫療保健業和酒店業最值得信賴的產品。

DEFIANCE

A soil- and stain-repellent finish with antimicrobial properties.

Defiance 技術具有防污、防泥及抗菌特性。

Celebrates 2 Women Weavers from Bauhaus
Gunta Stölzl and Anni Albers
Based on their design drawings and weaving structures
Adapting fibers and yarns for contract use

歌頌兩位 Bauhaus 的女性紡織師
Gunta Stölzl 和 Anni Albers
根據原作的設計圖案及編織結構
讓布料功能更全面完善，達到商業使用的要求



aus
tion



Anni Albers

Gunta Stölzl





DESIGNTEX 5 X 5, A CRYPTON® COLLECTION

Crypton® 25 years celebration
5 different artists
5 styles x 5 colorways
Offering permanent stain, moisture and odor resistance

慶祝 Crypton® 誕生 25 週年
5 位來自不同國家的藝術家
5 種款式 x 5 種顏色
提供永久防污、防水和防臭功能

Kapitza



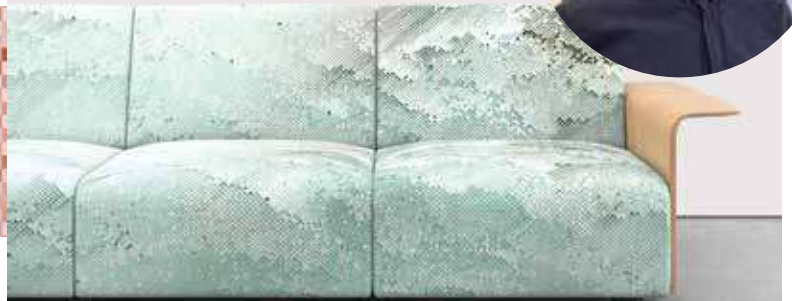
Arturo Guerrero



Elizabeth Atterbury



Philip David Stearns



Ellie Malin

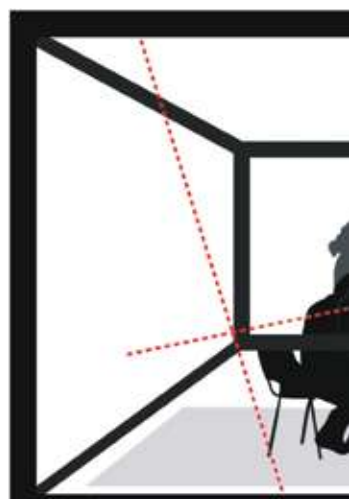




ACOUSTIC 3 x 3 WINDOW COVERINGS



NEERS



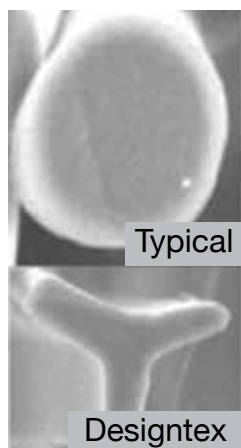
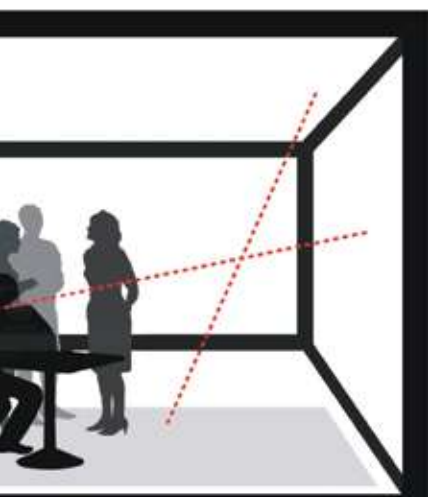
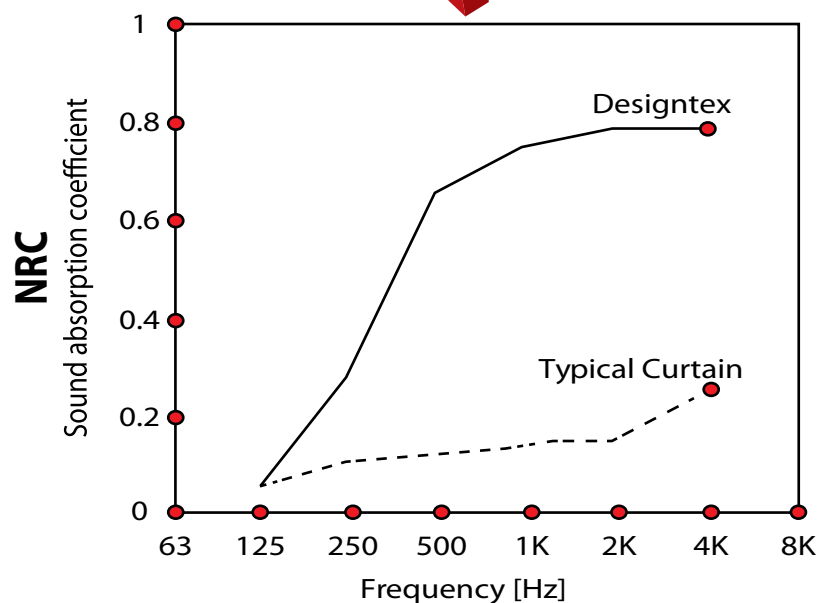
ROOM ACOUSTICS 室內吸音



Traditional polyester yarn cross-sections do not adequately shatter the sound waves. The newly engineered yarn has more surface area and is more effective at breaking up the sound waves and provides enhanced absorption.

傳統聚酯纖維的橫截面並不能完全吸收聲音，新研製的纖維 (Trevira CS) 含更多立體層面，能更有效地吸收聲波，只要配合正確的安裝，吸音效果將大大提升。

EMPA





WANNABE ACOUSTIC WALLCOVERING

Acoustics: NRC Direct Glue: 0.20, SAA Direct Glue: 0.21
LEED - Recycled Content
80 recycled water and soda bottles are reused to create
1 yard of Wannabe

吸音系數 : NRC : 0.20, SAA : 0.21
LEED - 回收物料
80 個回收再生塑膠樽能製造出 1 碼的 Wannabe

VINYL WALLCOVER

Low VOC
Bleach Cleanable
ASTM E 84 Adhered Class A : Flame Retardant
低 VOC
可用漂白水清潔
ASTM E 84 阻燃 A 級標準





TEXTILE WALLCOVERING

Acrylic Backing
Stain Repellent
Greenguard Gold
ASTM E 84 Adhered Class A : Flame Retardant

亞克力底
防污
Greenguard Gold 室內空氣質量認證
ASTM E 84 阻燃 A 級標準

RING



HOW IT WORKS

如何運作

First Step

13 thermo-reactive minerals is embedded into the core of polyester fibers during the extrusion process
Celliant 專有的 13 種熱反應性礦物質植入聚酯纖維紗線中



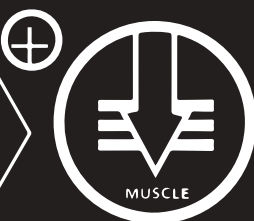
Second Step

absorb energy emitted by the body and transform into infrared energy
吸收人體發出的能量並轉化為遠紅外線能量



Third Step

reflect infrared energy back to the body, even through multiple layers of fabrics, making it possible for the tissue to absorb it
能穿透多層織物將紅外線能量反射回人體，細胞組織能有效吸收



Fourth Step

trigger vasodilation in the capillary bed and make more oxygen(O_2) and fuel available to your cells
有效血管舒張，為細胞提供更多氧氣



BACKING

THAT PROMOTES

WELLBEING...

Designtex Celliant® is a proprietary textile backing. It is a built-in technology which absorbs and re-emits the infrared (IR) electromagnetic light energy emitted by the body.

Designtex Celliant® 是紡織底布專利技術，吸收身體排放的自然熱量，並將其轉換成紅外能量(IR)，再以安全、自然的方式迴圈到皮膚和組織中。



Improve Circulation
促進全身組織和肌肉的血液循環



Boost Recovery
加速身體復原



Better Thermoregulation
體溫調節



Increase Tissue Oxygenation of More Than 7%
為細胞提高多於 7% 的氧氣含量



Build - in Technology Never Wash Off
植入式技術不會因洗滌而消失



USA Food and Drug Administration (FDA) Certificated
美國食品藥品監督管理局(FDA)認證

Designtex Celliant®

LEED 綠建築評估系統

LEADERSHIP IN ENERGY AND ENVIRONMENTAL DESIGN (LEED)



LEED for commercial interiors rating system (LEED CI) LEED 的商業內飾評級系統 (LEED CI)

Textiles and wallcoverings fall under the Commercial Interior (CI) rating system. Of the credit categories under LEED CI (sustainable sites, water efficiency, energy and atmosphere, materials and resources, indoor environmental quality, innovation and accredited professional), the most relevant category for green textiles is Materials and Resources, Indoor Environmental Quality, Innovation and Accredited Professional, the most relevant MR credits in more detail.

DesignTex applauds the growth in green building and the adoption of the Leadership in Energy and Environmental Design (LEED)[®] rating systems for architectural and interiors projects. We support these increasingly sustainable built environments by providing documentation to show how our products may align with credits in various LEED rating systems. DesignTex is proud to have been awarded LEED Gold for the 2008 re-design of our Chicago showroom.

DesignTex recognizes that LEED was developed for building projects and that it can sometimes be difficult to locate where fabrics fit into the rating systems. DesignTex has distilled the applicable LEED Materials and Resources credit categories for fabrics into three major areas, which DesignTex refers to as the 3 R's: Recycled content, Rapidly Renewable content, and Regional Materials. While these are not the only areas where surface materials may contribute credits on a project, they represent the majority of credit opportunities. In addition, the recent adoption of Cradle to Cradle product certification for Innovation credits is a favorable one for fabrics in the scheme of LEED.

紡織品和牆紙列入商業室內 (CI) 的評級制度。根據 LEED 的評審項目內容有：用地持續性、用水效能、能源和空氣、材料和資源、室內環境質量、創新和專業認可。當中與 LEED 評審項目最相關的，材料和資源，室內環境質量，創新和專業認可，以上項目若能提供更多證明，能達到更高的 LEED 級別。

DesignTex 的產品通過綠色建築和節能保護與環境設計 (LEED) 評級系統，適合建築和室內設計項目。DesignTex 支持這些可持續建築環境，產品可以配合不同級別的 LEED 認證評級。在 2008 年，DesignTex 的芝加哥陳列室獲得了 LEED 金獎級別。

DesignTex 明白到，開發綠色建築項目，有時很難應用到適合地方性的環保評級標準，因此選用了 LEED 作認證為基礎。LEED 的材料和資源的評級類別，可分為三個主要項目，稱之為 3R：循環再用項目、快速再生項目和區域性材料。在建築項目上，DesignTex 的牆飾或織品有助增加 LEED 的評級分數。此外，最近更通過了 Cradle to Cradle 產品評級，該認證是於 LEED 評級系統中的重要元素。

The WELL building standard WELL 建築標準

The WELL Building Standard is revolutionizing the way people think about buildings. It explores how design, operations and behaviors within the places where we live, work, learn and play can be optimized to advance human health and well-being.

Covering seven core concepts of health and hundreds of features, WELL is a flexible building standard and represents the future of modern design.

WELL 建築標準

WELL 建築標準使大眾對建築的印象徹底改觀，探索了我們日常生活的社區中各種設計、活動、行為，透過建築標準促進身心健康，使生活環境達至更美好。靈活變通的 WELL 建築標準覆蓋了七個核心的健康概念及過百項標準內容，代表了現代設計的趨勢。



AIR



WATER



NOURISHMENT



LIGHT



FITNESS



COMFORT



MIND

BEAM Plus Interiors 綠建環評室內建築

BEAM Plus Interiors covers the design and construction of fit-out, renovation and refurbishment works in non-domestic, occupied spaces. It can be used by landlords renovating individual units, or by the occupants of a space if they are responsible for fit-out works.

綠建環評室內建築評估主要用於非住宅室內空間的裝修、改造及翻新項目，既適合個別單位裝修的業主使用，亦可由負責相關工程的租戶提出申請。

How does BEAM Plus New Buildings assess?

綠建環評新建建築如何評級?

The assessment of building performance comprises six performance aspects:
建築物表現的評估包括右列六個範疇:

Energy Use 能源使用 (EU)

- Annual carbon dioxide emissions or energy use
全年碳排放或耗電量
- Energy efficient systems and equipment
節能系統及設備
- Energy management
能源管理

Materials Aspects 用材 (MA)

- Selection of materials 材料選用
- Efficient use of materials
減少材料浪費
- Waste disposal and recycling
廢物棄置及回收

Site Aspects 用地與室外環境 (SA)

- Location and design of the building
項目的地點和建築物的設計
- Emissions from the site 工地污染物的排放
- Site management 工地管理

Indoor Environmental Quality 室內環境質素 (IEQ)

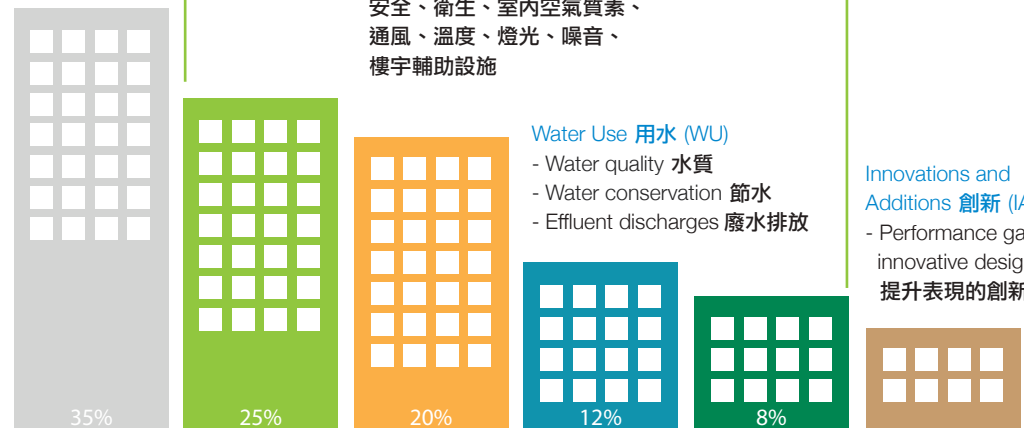
- Safety, hygiene, indoor air quality and ventilation, thermal comfort, lighting, acoustics and noise, building amenities
安全、衛生、室內空氣質素、通風、溫度、燈光、噪音、樓宇輔助設施

Water Use 用水 (WU)

- Water quality 水質
- Water conservation 節水
- Effluent discharges 廢水排放

Innovations and Additions 創新 (IA)

- Performance gains from innovative design solutions
提升表現的創新設計方案



The Singapore Green Building Council (SGBC)

SGBC is the only non-profit organization with a concerted private-public sector partnership to achieve a world-class and sustainable built-environment in Singapore. SGBC sets high standards and benchmarks for green building solutions both locally and regionally. Their key role is to advocate green building design, practices and technologies and drive environmental sustainability in the building and construction industry.

The key areas of SGBC's focus include:

- Profiling Singapore as a leading Sustainable Hub in the tropics through Public Education and Industry Promotion
- Providing a Dedicated Certification Body for Green Building-related Products and Services
- Creating International Collaboration, and Expanding Global Outreach
- Enhancing Professionalism and Knowledge in Sustainable Development Via Knowledge Creation and Industry Research
- Inspiring Membership

新加坡綠色建築議會 (SGBC) 是唯一在私營與公營之間建立環保合作夥伴關係的非牟利組織，旨在新加坡實現世界級的可持續建築環境，他們的主要職責是提倡綠色建築設計、實踐和技術，並推動建築行業的環境可持續性。

SGBC 的重點關注包括：

- 通過公共教育和產業推廣，推動新加坡成為領先的可持續發展中心
- 為相關綠色建築的產品和服務提供認證
- 建立國際性合作
- 提供環保知識和行業研究，增強專業知識
- 提供會員計劃



OEKO-TEX STANDARD 100

International Oeko-Tex Association 國際環保紡織協會

The Oeko-Tex 100 Standard comprehensively addresses the human ecology component of textile products. It evaluates and screens textiles for any harmful substances present within processed textiles that come into direct or near contact with the skin.

Oeko-Tex Standard 100 的標準是根據最新的科學知識，對各種織品的有害物質含量規定限度，評審和檢試紡織品的任何有害物質，在直接接觸或接近皮膚會否有影響。



GREENGUARD INDOOR AIR QUALITY

Greenguard Environmental Institute (GEI)

GEI has established performance based standards to define goods with low chemical and particle emissions for use indoors, including building materials, interior furnishings, and furniture. Greenguard certification only measures indoor emissions.

GEI 是室內空氣標準的一個基本指標，以確定貨品在室內只排放低量化學物和粒子，包括建築材料，室內裝修和家具。Greenguard 的認證只適用於測量室內排放。



SEVERAL CERTIFICATIONS

Scientific Certification Systems (SCS)

SCS is a third-party provider of certification, auditing and testing services, and standards. SCS offers certifications for the following:

Indoor Air Quality, which certifies low emissions for products in enclosed indoor environments.

SCS 是認證、審計及測試服務和標準的第三方供應商。

SCS 提供以下認證項目：

室內空氣品質，證明產品在封閉的室內環境低排放。



EU FLOWER CERTIFICATION

European Commission on the Environment 歐盟委員會－環境

The EU eco-labelling scheme is part of a strategy to promote sustainable production and consumption. The label guarantees that the products comply with established ecological criteria and have been tested by independent third parties.

The EU Flower:

- Analyzes product life cycles in order to study all potential environmental impacts.
- Is awarded to products with the lowest environmental impact in a given product range.

歐盟生態標籤計劃是促進可持續生產和消耗。該標籤保證產品符合生態標準的定義，並由獨立的第三方進行測試。分析產品的生命週期，以研究產品對環境產生的潛在影響。此認證是頒發予對環境影響最低的產品系列。



CRADLE TO CRADLE CERTIFICATION

McDonough Braungart Design Chemistry

Measures achievement in environmentally intelligent design and helps customers specify and purchase products that are pursuing a broader definition of quality. The six aspects considered for certification are:

本認證用於衡量應用環境保護物料的成效，幫助客戶根據更廣闊的質量定義選購產品。認證包含以下六個項目：

Energy 能源

End of life 生命週期

Multiple attributes 多屬性

Material and chemical inputs 材料與化學物質的應用

Social equity 社會公平

Water 水

As a permanent reference tool for designers and architects, Designtex provides an unprecedented array of exclusive products from the world's leading supplier of vinyl wallcovering. Designtex provides the necessary design flexibility to create dramatic commercial interiors.

Designtex 產品設計創新，具有高靈活性，可應用於不同的工程項目。以下為部份曾選用 Designtex 產品的工程項目。

Hong Kong 香港	<ul style="list-style-type: none">• Landmark Mandarin Oriental Hotel 文華東方酒店• Le Prabelle Hotel 儼凱酒店• Holiday Inn Golden Mile 金域假日酒店• Bank of Singapore 新加坡銀行• Natixis Bank 法國外貿銀行• Ocean Park 海洋公園• Hysan Place 希慎廣場• Pacific Century Insurance 盈科保險• Hong Kong Sanatorium Hospital 養和醫院• Lei Garden 利苑• Clarins 克蘭詩• Hong Kong Exchanges and Clearing Limited 香港交易所• China Certification & Inspection (Group) Co. Ltd 中國檢驗認證有限公司• The Hongkong and Shanghai Banking Corporation Limited 匯豐銀行	<ul style="list-style-type: none">• Skycity Marriott Hotel 香港天際萬豪酒店• Eaton Hotel 逸東酒店• Industrial and Communcial Bank of China 工商銀行• Bank of Communications 交通銀行• Barclays Capital 巴克萊銀行• Hong Kong Disneyland 香港迪士尼樂園• Merrill Lynch 美林証券• Willis Towers Watson 韋萊韜悅• Starbucks 星巴克• Dragon Inn Seafood Restaurant 容龍海鮮酒家• Godiva Chocolate
Macau 澳門	<ul style="list-style-type: none">• Venetian Resort Hotel 威尼斯人度假村酒店• Grand Lisboa Casino 新葡京酒店• Karl Lagerfeld Hotel 上葡京度假村	<ul style="list-style-type: none">• MGM Grand Hotel 美高梅金殿酒店• MGM Cotai 澳門美獅美高梅酒店
China 中國	<ul style="list-style-type: none">• Four Seasons Hotel – Beijing 四季酒店 – 北京• WF Central Hotel Portion 王府中環酒店項目 – 北京• WangFuJing Mandarin Oriental Hotel – Beijing 王府井文華東方酒店 – 北京• Microsoft Office 微軟辦公室 – 北京• Westin Hotel – Guangzhou 威斯汀酒店 – 廣州• Grand Bay View Hotel – Guangzhou 珠海海灣大酒店 – 廣州• Sulwhasoo – Guangzhou 雪花秀 – 廣州• Consulate General of Canada – Guangzhou 加拿大領事館 – 廣州• Ritz Carlton Hotel – Shenzhen 麗嘉酒店 – 深圳• JW Marriott Hotel – Shenzhen 萬豪酒店 – 深圳• One Shenzhen Bay T7 Hotel – Shenzhen 深圳灣壹號 T7 酒店公寓 – 深圳• EFC Renaissance Hotel – Hangzhou 歐美金融城萬麗酒店 – 杭州• Rhombus Park Aura Chengdu Hotel – Chengdu 成都隆堡酒店 – 成都• Xian Grand Hyatt – Xian 西安君悅酒店 – 西安• Hilton Hotel – Suzhou 希爾頓酒店 – 蘇州• Intercontinental Hotel – Hefei 合肥洲際酒店 – 合肥• Crowne Plaza Sanya Haitang Bay Resort – Sanya 三亞仁恆皇冠假日度假酒店 – 三亞• Starbucks – Shanghai / Guangzhou / Shenzhen 星巴克 – 上海 / 廣州 / 深圳• Shangri-la Hotel – Shanghai / Chengdu / Qingdao 香格里拉酒店 – 上海 / 成都 / 青島	
Asia 亞洲	<ul style="list-style-type: none">• Fullerton Hotel 浮爾頓酒店 – 新加坡• Century Square – 新加坡• Four Seasons Hotel – Malaysia 四季酒店 – 馬來西亞• Sequis Tower – Indonesia 塞奎斯大廈 – 印尼	<ul style="list-style-type: none">• Parkroyal Hotel – Singapore 皮克林酒店 – 新加坡• Starbucks – Vietnam 星巴克 – 越南• Hilton Hotel & Resor 希爾頓酒店及度假村 – 東帝汶
Oversea 海外	<ul style="list-style-type: none">• Imperial Pacific Resor – Saipan 博華皇宮 · 塞班 – 塞班島• Crown Perth Hotel – Australia 皇冠柏斯酒店 – 澳洲• Christian Louboutin – United Kingdom / Australia 英國 / 澳洲	

COLOUR PALETTE



5632
Chime



3969
Crackle



6733
Addison



6748
Orbit



3866
Score



3762
Crossweave



6737
Amari



6736
Alex



3929
Connor



3708
Gleam



3353
Alchemy



3955
Stride



3971
Inkwash



3976
Clad Celliant



3879
Phenomena



6703
Ossetra



2654
Samba



4141
Arne



3787
Carrick



3872
Flow



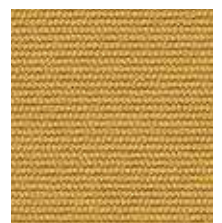
3773
Ink



3448
Woodcut



3887
Aspect



3854
Pause



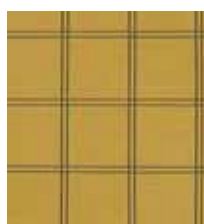
6725
Fold



6729
Madera



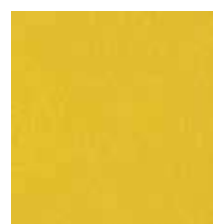
3921
Linnen



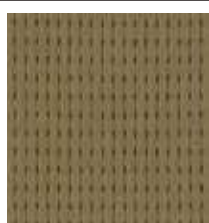
3794
Measure



3659
Boucle



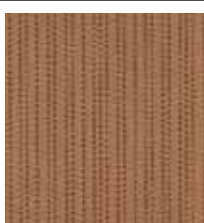
2711
Pigment



3557
Hyphen



4142
Birdseye



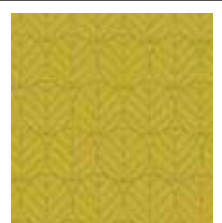
6718
Babel



3809
Rise



3919
Silicone Element



3494
Leaves



3919
Silicone Element



6541
Billiard Wall



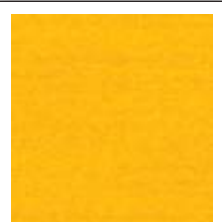
3888
Hyde



2682
Appleseed



2880
Faux Sure



3249
Delaine



3816
Burlap Weave



3722
Tweed Multi



6738
Anitra



3941
Viewpoint



3821
Building Blocks



3659
Boucle



3887
Aspect



3752
Hem Stitch



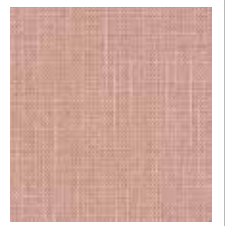
4142
Birdseye



3931
Fomo



3928
Linen Like



4149
Ulster



4144
Cloud Velvet



6646
Wannabe



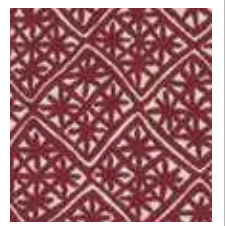
3776
Hint



4141
Arne



3893
Large Scale Geometric



3527
Aster



4120
Kabuto



3249
Delaine



2880
Faux Sure



3952
Schism



3272
Annex



3448
Woodcut



2682
Appleseed



3559
Crosshatch



3472
Tramway



3809
Rise



3492
Melange



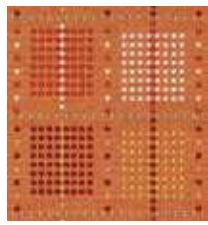
2682
Appleseed



3749
Tack Cloth



3468
Gamut



3814
Divide



3360
Bunta



3236
Nexus



3676
Rail



3839
Trove



3659
Boucle



2693
Rocket



3413
Alcazar



3816
Burlap Weave



3489
Chapiteau



3958
BitDrift



3924
Bixby Macro



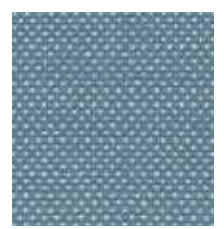
3894
Bixby Micro



6734
Adrian



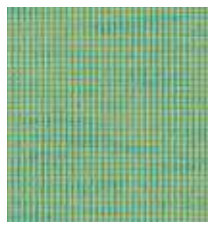
3975
Keen



3944
Boucle Dot



3776
Hint



3946
Mark



4148
Gridley



3703
Draft



3839
Trove



3683
Inklings



3662
Hashtag



3902
Trim



3901
Lumi



3272
Annex



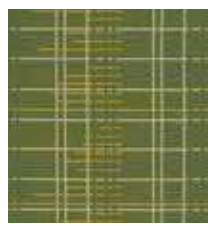
3837
Rainwater



3949
Split



3885
Collier



3472
Tramway



3869
Net



3573
Gale



3965
Pennant



3761
Hatchmark



3691
Whim



3661
Adler



3937
Dapple



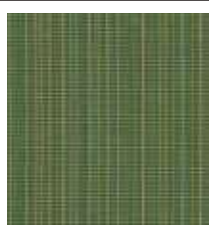
3533
Birch Bark Plaid



3814
Divide



3713
Mod



3868
Stratum



3629
Pleat



3822
Code



3929
Connor



3889
Metallo



3948
Tap



4147
Everywhere Texture



4118
Chiyogami



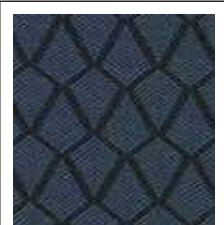
3947
Sense



3842
Josef



3673
Colten



3542
Alpine



4118
Chiyogami



2880
Faux Sure



5633
Binary



6747
Ikat Spot



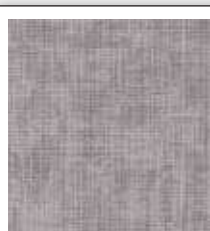
3959
CrissCross



3725
Shibori Stripe



3442
Rothesay



6735
Aiden



3258
Yucca



6749
Resurfacing



3881
Capsule



4143
Otto



3872
Flow



3446
W



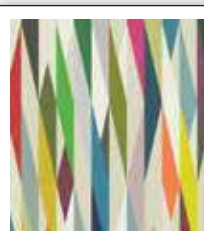
3033
Jacquard II



3529
Inga Large



3466
Pop Art



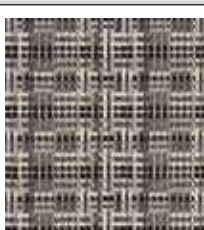
3531
Henrik Small



3786
Moquette



3896
Fluent



3853
Woven Texture



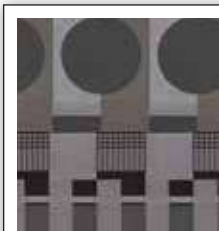
3826
Pixel



3960
Five Cities



3421
Gradate



3039
Circle Jacquard



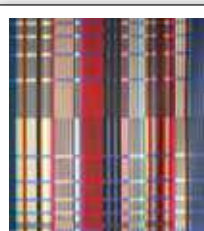
3883
Bead



3835
Forestbound



3561
Amwell



3563
Myddleton



3959
Criss Cross



3882
Triform



3623
Lambert



3538
Pika



3943
Finsbury



3956
System



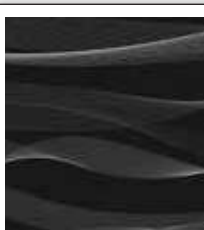
3786
Moquette



3678
Lattice



3624
Holmes



3865
Air



3851
Halyard



3528
Inga Small



3942
Cubitt

AND MORE...



TAT MING WALLPAPER

達 明 牆 紙

Established in 1981, Tat Ming Wallpaper Co., Ltd. has been providing high-quality wallpaper to various types of customers including professional interior designers, offices, hotels and residences. Our products come from countries renowned for their attention to quality and detail, such as the United States, the Netherlands, Belgium, Spain, France, United Kingdom and Japan, among others. With the usage of ever changing styles in our new products, such as curtain, fabric, Japanese and paper film, wallpaper professional mortar, flooring and digital printing, we strive to enable our customers to stay ahead of the latest trends in interior design.

In order to further enhance the service quality and the competitiveness of the company, we are committed to exploring new markets. Our services cover a wide range of major cities such as Hong Kong, Macau and Shanghai. In addition, our Singapore, Malaysia and Vietnam showrooms have already been in operation for a long time, which has enabled our sales network to be strengthened in Southeast Asia. In 2017, our Macau showroom was started to run to explore the hotel market, catering to the demands of the hotel industry and Grade A residential properties in Macau. In 2018, we opened our first Hong Kong concept showroom in Central.

To expand our distributing market in China, we also set up showrooms in Chengdu and Shanghai in 2019. In 2020, our 4th showroom in Hong Kong was opened.

達明牆紙有限公司自 1981 年成立，至今已累積逾三十年經驗，一直為專業室內設計師、辦公室、酒店及住宅等各類型的顧客提供優質牆紙，貨品主要來自美國、荷蘭、比利時、西班牙、法國、英國及日本等地，素質高達國際水平，現更持續引進時尚流行的新產品，如窗簾布藝、日式和紙膠片及專業牆紙膠漿等，款式萬千多變，讓顧客永遠快人一步，走在時代尖端。

為進一步提升服務質量及增強公司競爭力，本公司致力開拓新市場，服務範圍覆蓋香港、澳門及中國內地等多個主要城市。此外，新加坡、馬來西亞及越南陳列室亦已投入服務多時，以加強於東南亞區之產品銷售網絡。2017 年，在澳門增設陳列室，開拓澳門市場，迎合澳門酒店業及甲級住宅的需求。2018 年，在香港中環開設首間概念陳列室。2019 年，擴展中國業務，於成都及上海增設陳列室。2020 年，於尖沙咀開設香港第 4 間陳列室。



Wanchai Showroom | 灣仔陳列室



Tsim Sha Tsui Showroom | 尖沙咀陳列室



Central Showroom | 中環陳列室



Shatin Showroom | 沙田陳列室

Hong Kong | 香港

灣仔
Wanchai

Hong Kong Head Office :
14/F, 18/F, Kwan Chart Tower, 6 Tonnochy Road, Wanchai, Hong Kong
香港 總公司 :
香港 灣仔 杜老誌道 6 號 群策大廈 14 及 18 樓 全層

Tel 電話 : (852) 2893 0068
Fax 傳真 : (852) 2893 0026



灣仔
Wanchai

16/F, Kwan Chart Tower, 6 Tonnochy Road, Wanchai, Hong Kong
香港 灣仔 杜老誌道 6 號 群策大廈 16 樓

Tel 電話 : (852) 2910 2268
Fax 傳真 : (852) 2838 6115



中環
Central

54 Hollywood Road, Central, Hong Kong
香港 中環 荷里活道 54 號

Tel 電話 : (852) 2735 6337
Fax 傳真 : (852) 2735 9001



沙田
Shatin

Shop 343, Level 3, Home Square, 138 Shatin Rural Committee Road, Shatin, NT, Hong Kong
沙田 鄉事會路 138 號 新城市中央廣場 HomeSquare 3 樓 343 號舖

Tel 電話 : (852) 2412 0337
Fax 傳真 : (852) 2416 6337



尖沙咀
Tsim Sha Tsui

Unit 1602, 16/F, Mira Place Tower A, 132 Nathan Road, Tsim Sha Tsui, Kowloon, Hong Kong
香港九龍尖沙咀彌敦道 132號 美麗華廣場 A座 16 樓 1602室

Tel 電話 : (852) 2167 8337
Fax 傳真 : (852) 2175 8337



Macau | 澳門

Rm R, 21/F, Centro Comercial Cheng Feng, Alameda Dr. Carlos d' Assumpcao, nos 322 - 362, Macau
澳門 宋玉生廣場 322 - 362 號 誠豐商業中心 21 樓 R 室

Tel 電話 : (853) 2850 8533
Fax 傳真 : (853) 2850 8566



Shenzhen | 深圳

Room LMN, 23/F, Block A, Fortune Plaza, No. 7002-4 Shennan Ave, Futian District,
Shenzhen, Guangdong, China Postal Code: 518040
深圳市 福田區 深南大道 7002 - 4 號 財富廣場 A 座 23 樓 LMN 室 郵編 : 518040

Tel 電話 : (86-755) 8270 0337
Fax 傳真 : (86-755) 8270 0398



Guangzhou | 廣州

天河區
Tian He District

Room 918, 9/F, Block B, China Shine Plaza, No. 9 Lin He Xi Road, Tian He District,
Guangzhou, China Postal Code : 510610
廣州市 天河區 林和西路 9 號 耀中廣場 B 座 9 樓 918 室 郵編 : 510610

Tel 電話 : (86-20) 8928 0337
Fax 傳真 : (86-20) 8981 0337



海珠區
Hai Zhu District

Shop A07, 1st Floor, Huipu Jiaju Building Materials Center, No.408 South of Jiangnan Avenue,
Hai Zhu District , Guangzhou, China Postal Code: 510220
廣州市 海珠區 江南大道南 408 號 匯普家居建材中心 一樓 A07 商舖 郵編 : 510220

Tel 電話 : (86-20) 8988 6337
Fax 傳真 : (86-20) 8988 6337



Shanghai | 上海

靜安區
Jing An District

Room 2102-2106, Enterprise Square, No.228 Mei Yuan Road, Jing An District,
Shanghai, China Postal Code : 200070
上海市 靜安區 梅園路 228 號 企業廣場 2102 - 2106 室 郵編 : 200070

Tel 電話 : (86-21) 6381 3817
Fax 傳真 : (86-21) 6381 3806



Chengdu | 成都

Room 2303, Unit 3, Building 1, Shudu Center Phase II Office Building, No.333 Jiqing Third Street, Tianfu Avenue,
High - Tech Zone, Chengdu City, Sichuan Province, China Postal Code : 610000
成都市 高新區 天府大道 吉慶三街 333 號 蜀都中心 二期寫字樓 1棟 3 單元 2303 號房 郵編 : 610000

Tel 電話 : (86-28) 6577 0733



Beijing | 北京

Flat M, 17/F, Oriental Kenzo, No. 48 Dong Zhi Men Wai Street, Dong Cheng District,
Beijing, China Postal Code : 100027
北京市 東城區 東直門外大街 48 號 東方銀座寫字樓 高區 17 樓 M 室 郵編 : 100027

Tel 電話 : (86-10) 5817 4037
Fax 傳真 : (86-10) 5817 4009



Singapore | 新加坡

61 Ubi Road 1, #01-37 Oxley Bizhub, Singapore Postal Code : 408727

Tel 電話 : (65) 6327 7337
Fax 傳真 : (65) 6327 8665



Malaysia | 馬來西亞

No. 272 Reed, No. 1 Jalan Tasik Damai
57000 Sungai Besi, Kuala Lumpur, Malaysia



Vietnam | 越南

356 Tran Hung Dao Street, 11 Ward, 5 District,
Ho Chi Minh City, Vietnam

Tel 電話 : (84-28) 3856 3418
Fax 傳真 : (84-28) 3853 7503





TAT MING WALLPAPER

達 明 牆 紙

www.tatming.com