

Zaha Hadid Architects
X
GENCDARK



Zaha Hadid Architects x Gencork

London, UK

2022-2024

Zaha Hadid Architects (ZHA) has partnered with Gencork to create a series of striking cork feature walls for its London office combining the natural properties of cork with advanced computational design. Spanning four storeys, the bespoke wall designs are based on a selection of ZHA projects and reflect different stages in ZHA's evolving design methodology. Beyond their aesthetic appeal, the sustainable cork walls offer functional benefits such as acoustic absorption, thermal comfort, and anti-vibration properties, enhancing the workspace environment. The rich texture of expanded black cork brings a tactile warmth and an understated sophistication to the interiors.

The pattern on display in the ZHA Gallery is based on Zaha Hadid's painting 'Victoria City Aerial' (1998), a competition to design a mixed-use development in West-Berlin. The design transforms the multi-perspectival painting into a captivating 3D wall relief.

The first floor features a design inspired by the Vitra Fire Station (1991-1993). The pattern is based on a paper relief model of the project and captures the sharp, angular forms that defined ZHA's early built work.

On the second floor, the Thalia pattern originates from ZHA's explorations into generative design and robotic fabrication. Developed through computational algorithms, the parametric design underwent many iterations before taking on its three-dimensional sculptural form. This intricate design was launched as a commercial product in January 2025 in occasion of Maison & Objet.

The third floor showcases a relief pattern inspired by the Winton Gallery (2014-2016), drawing on dynamic flow fields and complex geometries that informed ZHA's computationally driven designs for the Science Museum's Winton Gallery.

Gencork's expanded cork is locally sourced and manufactured using biomass to generate the energy needed for steam production, which is crucial for creating expanded black cork, resulting in a minimal environmental footprint. This approach is in line with ZHA's broader commitment to sustainability. The collaboration between the two brands demonstrates how digital fabrication and ecological considerations can shape contemporary interiors, bringing together innovation and environmental responsibility.

Design and Technical Development

Zaha Hadid Architects

Principal: Patrik Schumacher

Architectural Design: Chris Lepine, Nannette Jackowski, Theodor Wender

Computational Design and Development: Shajay Bhooshan, Vishu Bhooshan, Henry Marie-Perrine Placais

Louth, Philip Singer, Aditya Bhosle, Cesar Fragachan, Tommaso Casucci, Binru Wang, Federico Borello

Production Support

SOFALCA / GENCORK

Fabrication, Installation and Technical Support

SOFALCA

Paulo Estrada, Miguel Estrada, Ricardo Gonçalves, Mafalda Menezes

Computational Design Support

SPECTROOM (Portugal) Le_Brimet

Fire Treatment

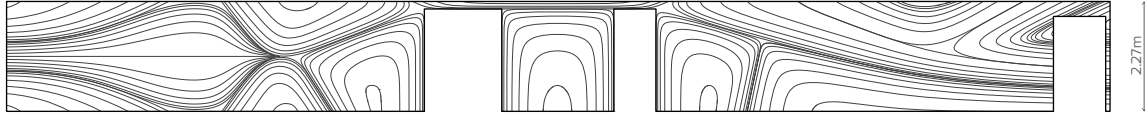
PROTECTFLAM

On site Installation

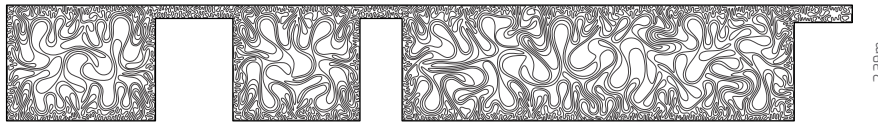
Weintegr8

Four cork patterns _ by Zaha Hadid Architects

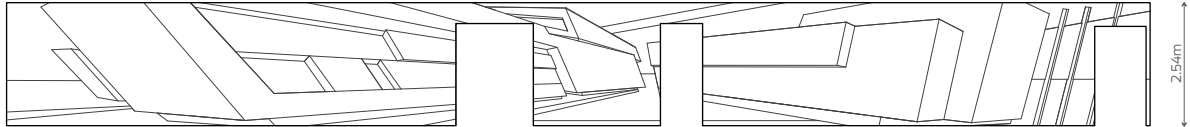
Third Floor - The Winton Gallery



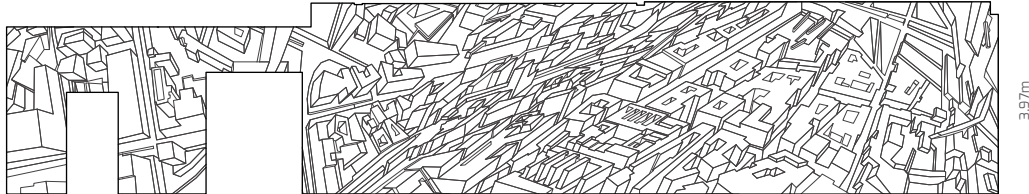
Second Floor - Thalia



First Floor - Vitra Fire Station



ZHA Gallery - Victoria City Aerial



Victoria City Aerial _Pattern Design by Zaha Hadid Architects



Photograph by Luke Hayes

Vitra Fire Station _Pattern Design by Zaha Hadid Architects



Photograph by Luke Hayes

Thalia_Pattern Design by Zaha Hadid Architects



Photograph by Luke Hayes

The Winton Gallery _Pattern Design by Zaha Hadid Architects





