

# **Sustainability, Design and Architecture**

at the service  
of people

**ACTIU**







*Design, Sustainability and People;*  
**A Mediterranean  
industrial project that  
looks to the future**



# Company and history

**1968-1970**  
Get to know us

**1982-1995**  
Expansion

**2000-2008**  
Team

**2012-2017**  
Brand

**2018-2019**  
50 Years

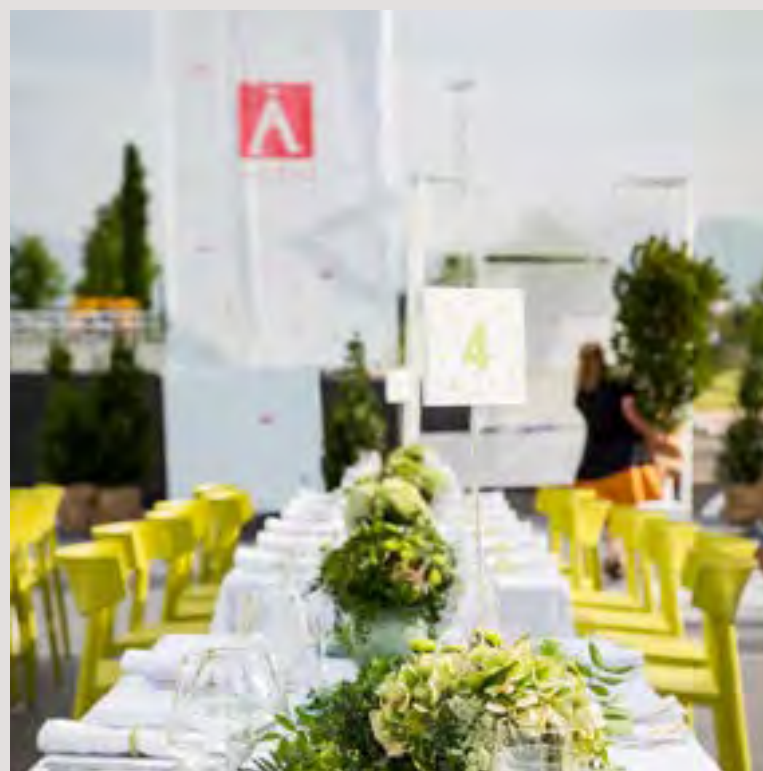
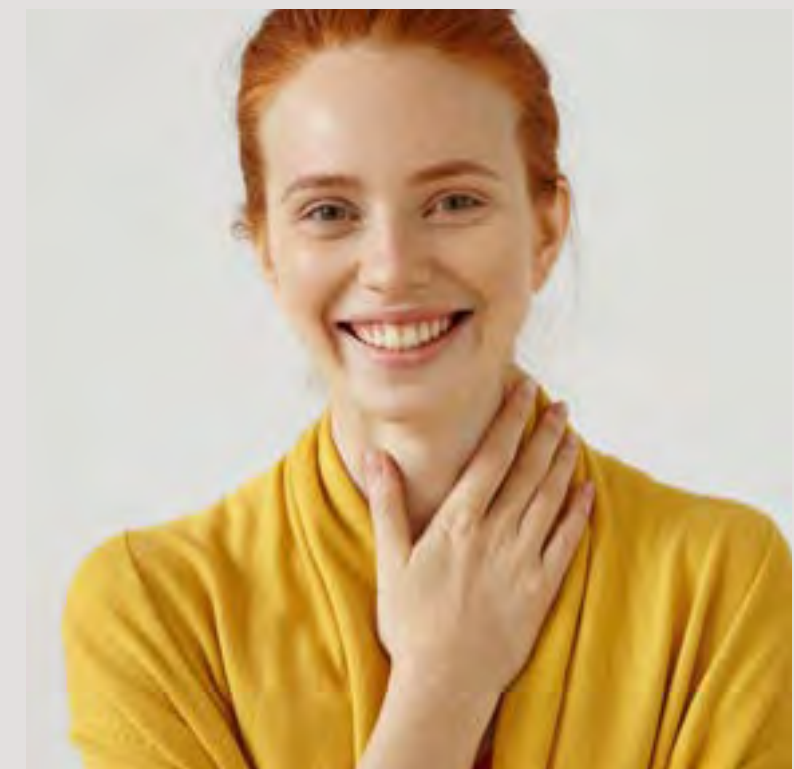
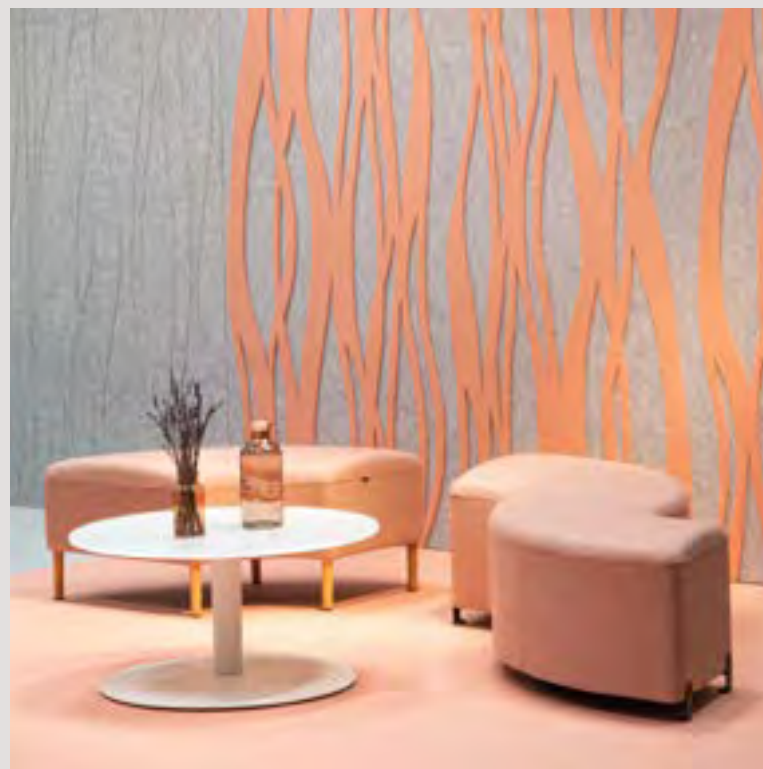
**2019-2020**  
People

**2020-2022**  
Culture

**2023**  
Evolution

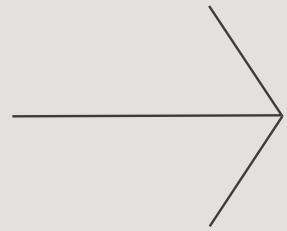
**2024**  
Industry

see video





# Our Values



Well-being



Design



Innovation



Manufacturing



Sustainability





# Around the World

**96** Countries  
**120** Showrooms  
**1500** Projects



ALGERIA - ANGOLA - ARGENTINA - AUSTRALIA - AUSTRIA - AZERBAIJAN - BAHRAIN - BELGIUM - BRAZIL - BULGARIA - CANADA CAPE VERDE - CHILE  
CHINA - COLOMBIA - COSTA RICA - CYPRUS CZECH REPUBLIC - DENMARK - DOMINICAN REPUBLIC - ECUADOR ECUATORIAL - GUINEA EGYPT  
ESTONIA - FINLAND - FRANCE - FRENCH - POLYNESIA - GERMANY GHANA - GREECE GUADALUPE GUATEMALA - GUINEA - HAITI - HOLLAND  
HONG KONG - HUNGARY - ICELAND - INDIA INDONESIA - IRAN - IRAQ - IRELAND ITALY - IVORY - COAST JAPAN - JORDAN - KAZAKHSTAN  
KOREA - KUWAIT - LEBANON LIBYA - LITHUANIA - LUXEMBOURG - MALI MALTA - MARTINIQUE - MAURITANIA - MEXICO - MOLDOVA - MOROCCO  
MOZAMBIQUE - NEW CALEDONIA - NICARAGUA NIGERIA - NORWAY - NZ - OMAN - PANAMA - PERU - PHILIPPINES - POLAND - PORTUGAL -  
PUERTO RICO - QATAR - REUNION ISLAND - ROMANIA - RUSSIA - SAUDI ARABIA - SHANGHAI - SENEGAL - SINGAPORE - SLOVAKIA - SLOVENIA -  
SOUTH AFRICA - SPAIN SWEDEN - SWITZERLAND THAILAND - TUNISIA TURKEY - UAE UKRAINE - UNITED KINGDOM - URUGUAY - USA - VENEZUELA





**Sustainable on the outside,  
healthy on the inside**



# Sustainable architecture

**LEED  
Platinum**

see video 



We have been LEED Platinum certified since 2019, the highest certificate that guarantees our Technology Park has been built with respect for the environment and with a design that allows for the efficient use of resources.



# Leed, the consequence of a philosophy

**CO<sub>2</sub> tons avoided:** TmCo<sub>2</sub> Eq 1.845

**Present in 96 countries**

**No. of product references:** 35.000

**Production capacity:** 2.000.000 € a week



**ANUARIA**  
Premios del Diseño  
Gráfico Español



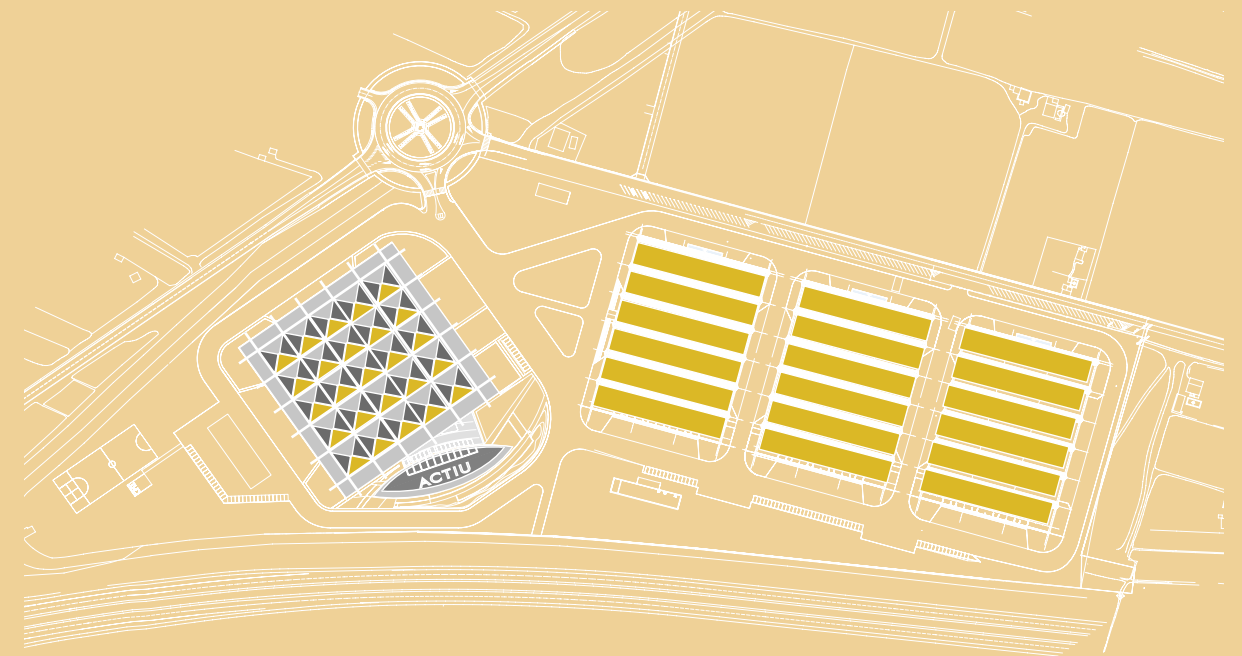
Actiu Technology Park Awards:







# Self-sufficient in resources





# Waters

## rainwater







**Natural  
environment:**  
native  
landscape





# Healthy

## Well Building Standard

see video 

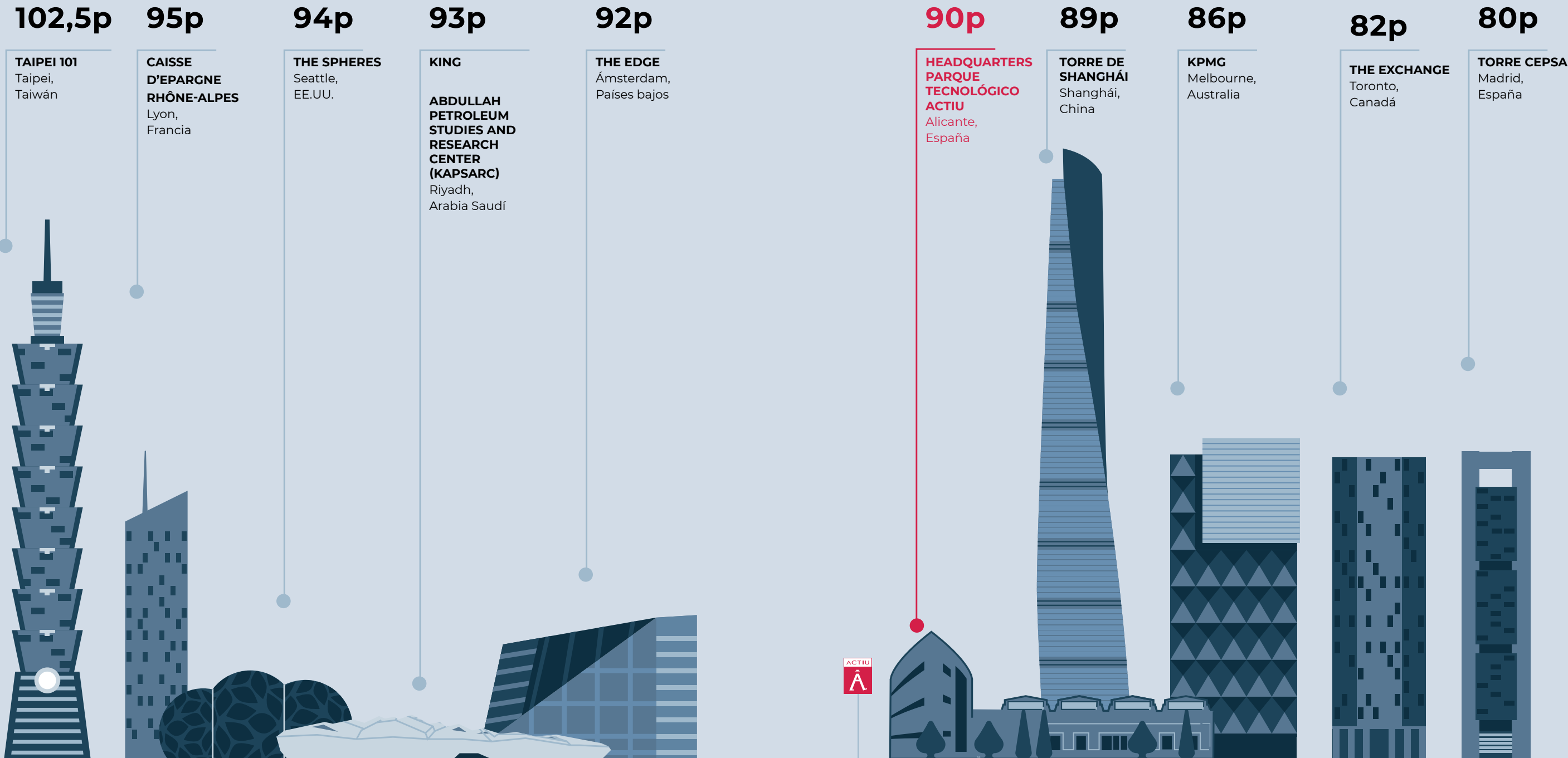


At Actiu, we prefer to focus on action rather than theory, as there are experts who take care of that. We are happy to see that our commitment is endorsed by prestigious organisations. Recently, the International WELL Building Institute renewed our WELL Platinum certification, obtained at the end of the last decade, and our score has risen from 82 to 90 points. This recognition highlights the emphasis we place on the well-being of our employees and users, placing us at the forefront in our country and among the most outstanding headquarters at international level in this aspect.



# The welfare of facilities around the world

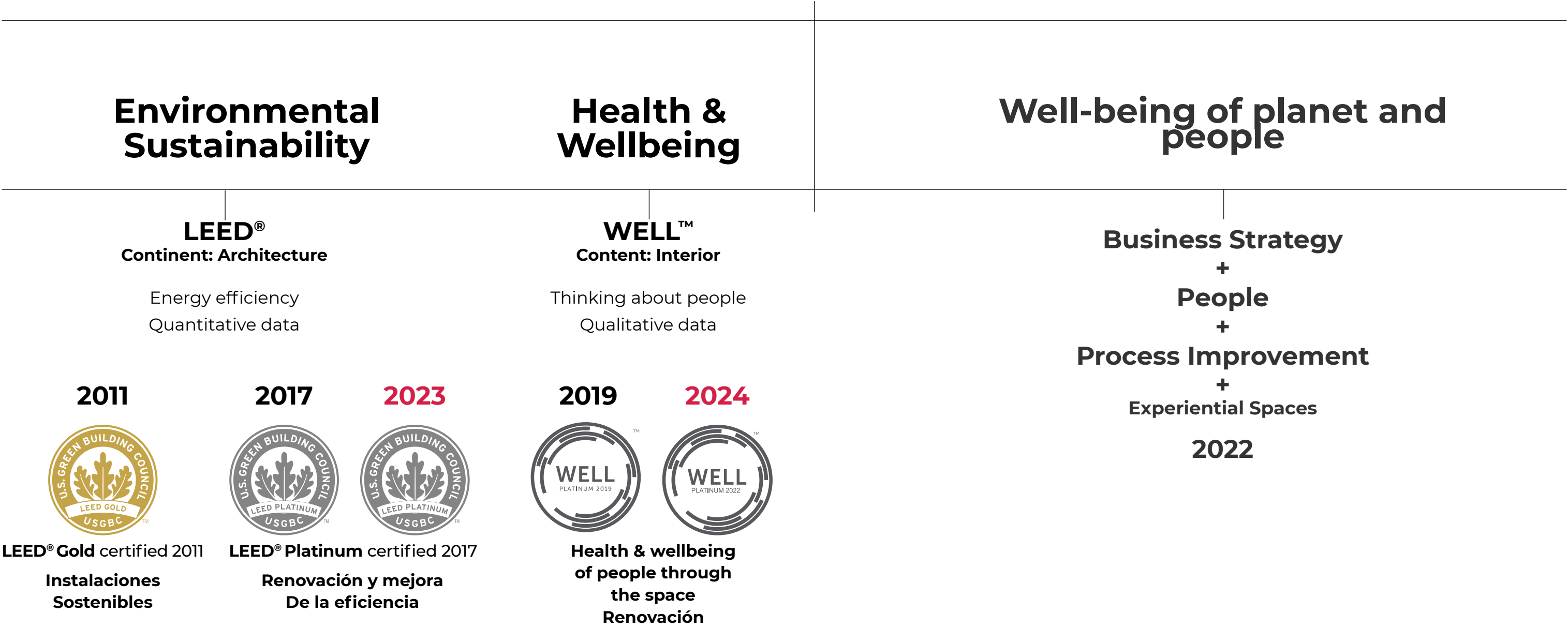
p= Points obtained in the WELL certification.



\*\* The buildings shown are all WELL Platinum certified, in different categories: WELL v2 Certification, WELL v2 Core and WELL v2 Pilot.



Actiu Technology Park



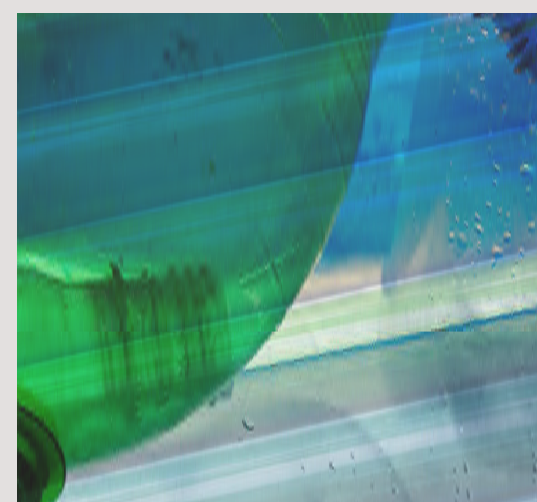
First industrial company to achieve LEED and WELL Certificates both at Platinum level.



# Endless Mediterranean







# Materials & processe

- 0% formaldehyde.
- 60 plastic injection robots.
- Polyurethane with HFO.
- Steel and aluminium 100% recycled.
- Coating without OVCs.
- Sustainable fabric with C<sub>2</sub>C certification.







Industry enters a new sustainable

see video



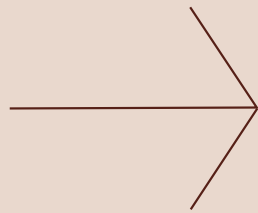


# Coming Soon

## Cradle 2 cradle “all products”



## Level





# Materials and production

**We are at the forefront**  
of manufacturing industry

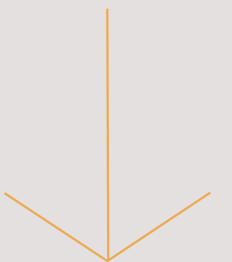
Actiu team  
Industry 4.0  
Robotic manufacturing  
Custom-made  
technology  
Innovation in materials  
and processes





# Actiu Team

## The heart of production





Welcome to the era of high performance offices.

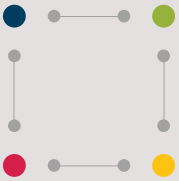
# COOL WORK- KING

A High Performance Work Office is one that provides its workers with spaces for the exchange of knowledge and ideas to flow, that favours casual encounters between colleagues from different work teams, that encourages inter-generational socialisation between workers or that allows its teams to enjoy moments of disconnection for inspiration or relaxation.

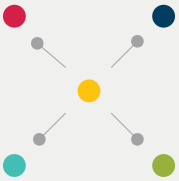
To achieve this, our equipment proposals connect the five basic work styles promoted on the Cool Working methodology.



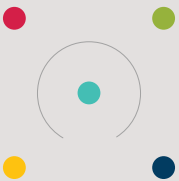
SOCIALIZACIÓN  
/ SOCIAL TIME



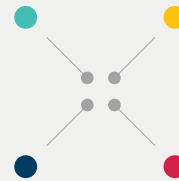
APRENDIZAJE  
/ LEARNING



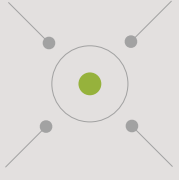
CONCENTRACIÓN  
/ FOCUS



COLABORACIÓN  
/ TEAM WORK

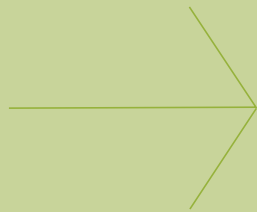


CONFIDENCIALIDAD  
/ PRIVACY





# Did you know that...?



**Almost all (86%) productivity problems in organisations are related to the working environment.** <sup>(1)</sup>

**An environment that facilitates a high level of interaction between workers stimulates the creativity and knowledge transfer that are crucial to generate innovation.** <sup>(2)</sup>

**Did you know that the work environment can influence worker satisfaction by up to 24%?** <sup>(3)</sup>

**Did you know that informal meeting spaces are where most (80%) of valuable interactions between colleagues take place?** <sup>(4)</sup>



[1] Sehgal, S., (2012), Relationship between Work Environment And Productivity, International Journal of Engineering Research and Applications 2(4): 1992-1995

[2] Haynes, B., (2008), An evaluation of the impact of the office environment on productivity, Facilities, 26 (5/6), 178-195

[3] Brill, M., Weidemann, S., (2001), Disproving Widespread Myths About Workplace Design, Kimball International, Jasper, Indiana

[4] Ward, V & Holtham, C., (2000), The role of private and public spaces in knowledge management, presented at Knowledge Management: Concepts and Controversies Conference, 10-11 February 2000, University of Warwick, p 7



# Your high performance space in 4 steps

Cool Working requires four steps that constitute the basic processes of the methodology. Each of these processes uses IOP (People Oriented Innovation) tools from the Institute of Biomechanics of Valencia.



## Identification of needs

We gather the requirements in the scope of your office space. The identification of needs can involve both the organisation's managers and the workers who are going to use the facilities. The collected requirements will allow us to generate a specification document.



## Proposal generation

As a starting point for the generation of the proposal, we prepare a specifications document (briefing) with all the requirements collected in the previous phase. We involve your team in a session to generate solutions at a conceptual level, covering the requirements collected.



## Evaluation of solutions

Our development team will generate solutions based on the conceptual proposals, and document them in a format suitable for your evaluation.



## Accompaniment

The last step, the accompaniment step, includes the evaluation, training and communication of the solution. For this, we jointly evaluate the High Performance Space proposal in order to assess whether the objectives proposed at the beginning of the project have been duly covered.



## *Regenerative* **Design**

Regenerative design represents a fundamental tool for restoring and improving the state of our environment, leaving it better than how we found it. It aims to ensure that systems not only maintain their qualities, but can also meet the future needs of both people and the ecosystem. It is about creating systems that mimic natural processes and work in harmony with their environment, rather than in opposition to it.



## *Inclusive* **Spaces**

As awareness of the importance of diversity and inclusion in spaces grows, it is clear that focusing on physical barriers alone is not enough. There are other constraints, such as neurodiversity, that are not always obvious at first glance. It is essential to design an inclusive space that allows for the diverse needs of all team members to be considered in order to create environments that are accommodating and conducive to life in them.



## *Hybrid* **Life**

As society increasingly embraces remote working and learning, as well as the ability to maintain productivity from anywhere, a new era is emerging that celebrates a hybrid lifestyle. This lifestyle does not involve being anchored to a single place to work, learn and reside, but having the freedom to travel and explore new destinations that enrich our experience.



# Life *Centred* Design

*ACTIU's new vision to start operating from the coordinates of "Life-Centred Design", creating regenerative and inclusive spaces that respond to people's new living needs and reduce environmental impact.*



# Designers Product



## Archirivolto Design

Founded in 1983 in Colle di Val d'Elsa (Italy), Archirivolto Design is the result of collaboration between designers Marco Pucci and Claudio Dondoli. For more than three decades, the studio has specialized in the design of seats, from sofas to stools and chairs for workspaces and collective environments. His designs incorporate different materials, with special emphasis on plastic.



## Ramos Bassols

Ramos Bassols are David Ramos and Jordi Bassols, both industrial designers. The studio started in 2004, after several years of experience in different fields such as urban furniture, tableware, lighting and office furniture. Ramos Bassols offers a personal view on contemporary design, always searching for the balance between form, function and aesthetics with products with clean lines, as well as warm and attractive for the public.



## Alegre Design

Andres Baldoví and Marcelo Alegre have worked together for more than 20 years, ensuring a cohesive and effective approach in guiding clients through the development of their products and delivering an accurate design vision. Working across different industries during this time has allowed them to cultivate intuition, gain perspective, and acquire knowledge of the complexities of our globalized world.



## Enrico Frigerio

Frigerio Design Group is an architecture studio specialised in designing the 'intelligent' workplace and promoting 'slow architecture', a design philosophy which draws its resources from the context. Founded in 1991 by Enrico Frigerio, FDG designs work environments with a smaller ecological footprint, ergonomically and emotionally comfortable, promoting well-being to all users.



## Odosdesign

For over 21 years Odosdesign has amassed experience by using creativity, research and transformative design to provide the most impactful and lasting results. Their work is a solution and a commitment with the aim of cultivating a long term relationship with their clients, shaping the industry by using creativity as a strong lead to simultaneously shape companies and the design culture.



## Lledo & Campos

Their creations go from home office to office furniture, public property, interior architecture, fairs and exhibitions with practical, tempting, lasting, functional and logic proposals. They have done projects for companies such as: Actiu, Paco Capdell, Danone, Andreu World, Tekhne Italia, Grassoler, Porada, Kibuc, Mariner, Molder, Disnova, Ziru, etc.



## Jose Manuel Ferrero de Estudi{H}ac

estudi{H}ac is conceived as a design atelier, founded by José Manuel Ferrero, specialised in carrying out tailor-made projects in product design, interior architecture and the creation of ephemeral assemblies. All of them are tailor-made for each client, creating unique, timeless spaces or products that surprise both for their initial visual and their history, offering a fresh and renewed vision of any company, product or brand.



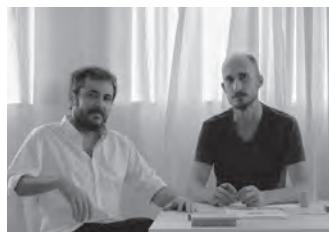
## Stone Designs

Stone Designs is a multidisciplinary studio that develops both interior design and product projects, but from a prism that makes them unique. That value is none other than the human value. Stone makes projects by and for people. Avant-garde projects because they have always, for almost 25 years now, been focused on the same objective, which is none other than helping us to be happier every day.



## NACAR - Javier Cuñado

Nacar Strategic Agency collaborates with their client's team and become its strategic partner during each stage of their product life cycle to understand and design successful solutions to their end users and customers. To answer their most difficult questions, they use a variety of techniques, methodologies and best practices to support each stage of the product development life cycle.



## Sylvain Carlet & Isern Serra

Since 2008 Sylvain Carlet and Isern Serra have offered global design solutions (architecture, interior design and industrial design) for customers in public and private sectors. In the projects, developed in the office world, their work philosophy has always lead them to new functional solutions and to create suitable environments for the identity, the needs and the constant evolution of the companies nowadays.



## Vicent Berbegal

Vicent Berbegal, founder of Actiu, is the essence of this story. His vision and dedication turned a workshop into the leading global office furniture company. His ethics marked the corporate culture, prioritising design and innovation. In the 1980s, he created the first TV stand in Spain and, a decade later, the first home PC desk, anticipating the rise of the Home Office. In 30 years, he guided Actiu's growth, adding talent and collaborating with professionals.



## Ramón Esteve Estudio

At Ramón Esteve Estudio we talk about architecture and design as a global and inseparable concept, generated under the same laws and with the same project premises. With a multidisciplinary team, we work together in the development of projects with character, in the search for a common goal: to generate creative responses in our environment by creating unique spaces, objects and brands.



## Sigfrido Bilbao

Studied interior architecture at the Iade International School in Barcelona and industrial design at the Masana School in Barcelona. Member of the Bureau of European Designers Association BEDA and the Association of Professional Designers ADP. He worked for several years as an industrial designer in the companies Galo/ben and Assis mobiliario. In 1989 he founded his own studio, specialising in office, home and home office furniture.



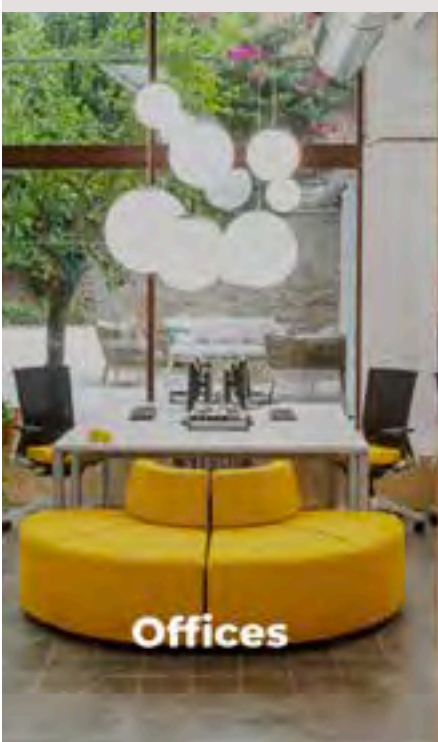
## Arnau y Reyna

A+R design products that connect with the user and the spaces they inhabit. A+R start from simple ideas that evolve through the design process. Timeless pieces that are not influenced by passing trends. A+R believe in design as a strategy, an intangible tool that is a fundamental pillar for companies as a driver of productivity and growth.



# Actiu Projects

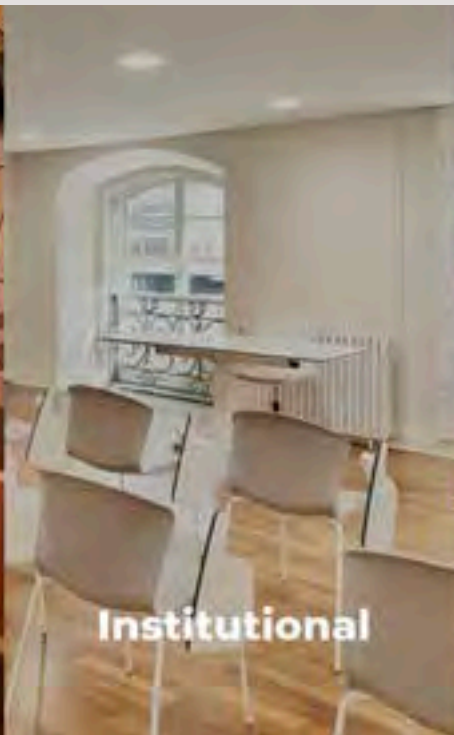
Find inspiration from the best options for  
furnishing your office space.



**Offices**



**Auditoriums**



**Institutional**



**Healthcare**



**Education**



**Airports**



**Hospitality**



# Offices Actiu

> **Adidas**  
Mexico City

[see project](#)





# Hospitality **Actiu**

> **Astoria**  
Finlandia

[see project](#)





# Auditorium **Actiu**

> **Sberbank**  
Rusia

[see project](#)





# Healthcare **Actiu**

> **CEMDOE**  
Santo Domingo

[see project](#)





# Aiports **Actiu**

> **Mallorca**  
Spain

[see project](#)





# Education **Actiu**

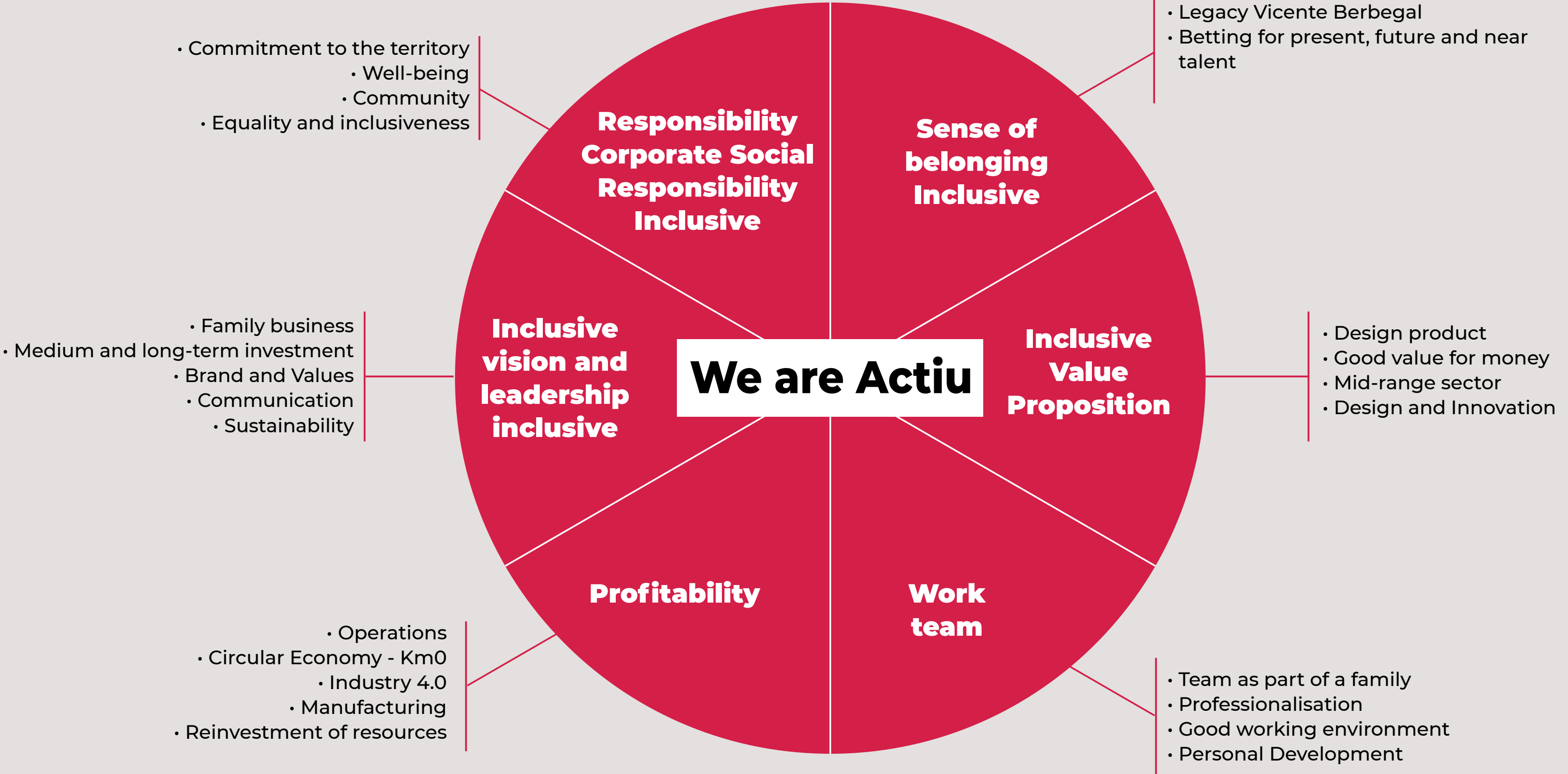
> **Santa María Business**  
Panamá

[see project](#)





# We are Actiu





# Family Actiu

**1st and 2nd  
Generation**





# Family Actiu





# Thank you

see video 



